

APPENDIX H

DRIFT CROSS SECTIONS .

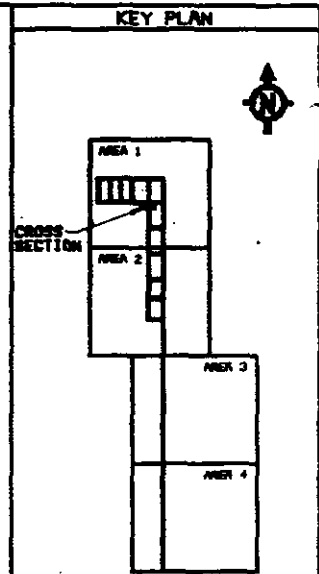
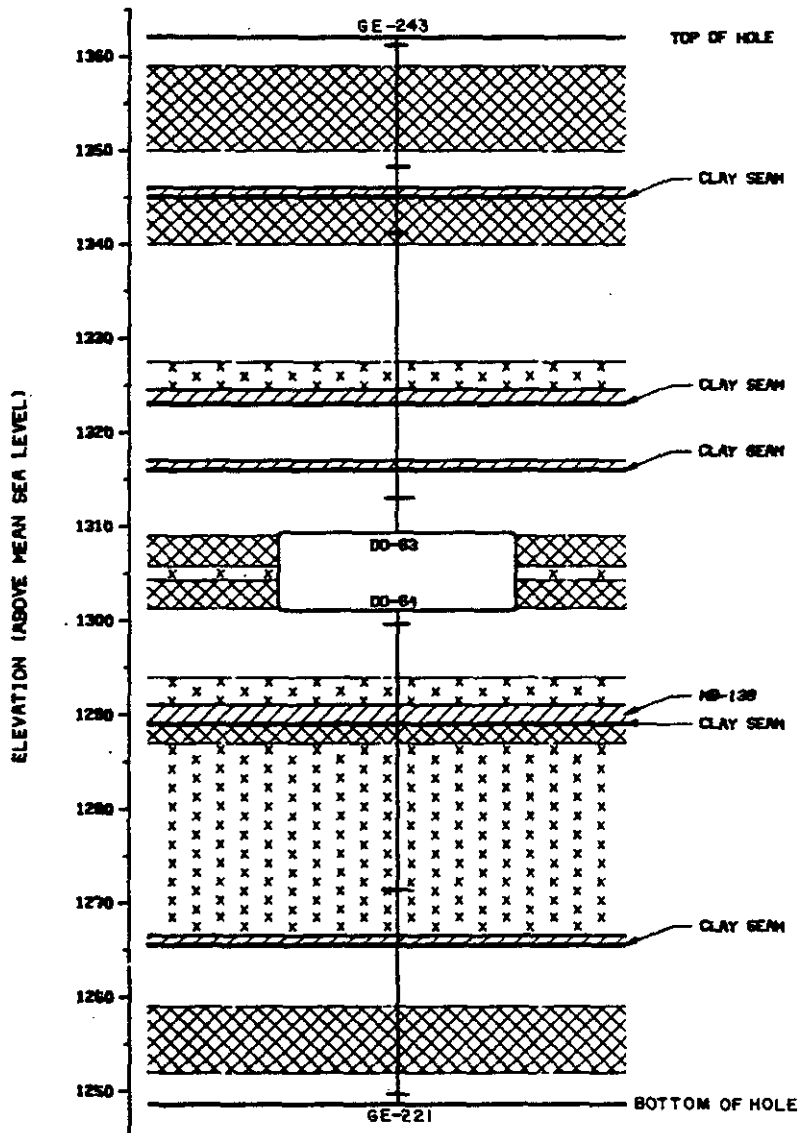


## CONTENTS

<u>Figure No.</u>	<u>Title/Description</u>
H-1	East-West Cross Section - E0 Drift at N1410
H-2	East-West Cross Section - E0 Drift at N1110
H-3	East-West Cross Section - E0 Drift at N621
H-4	East-West Cross Section - E0 Drift at N146
H-5	East-West Cross Section - W30 Drift at S406
H-6	East-West Cross Section - E140 Drift at S1320
H-7	East-West Cross Section - E140 Drift at S1960
H-8	East-West Cross Section - E140 Drift at S2421
H-9	East-West Cross Section - E140 Drift at S3079
H-10	East-West Cross Section - E140 Drift at S3656







NOTES

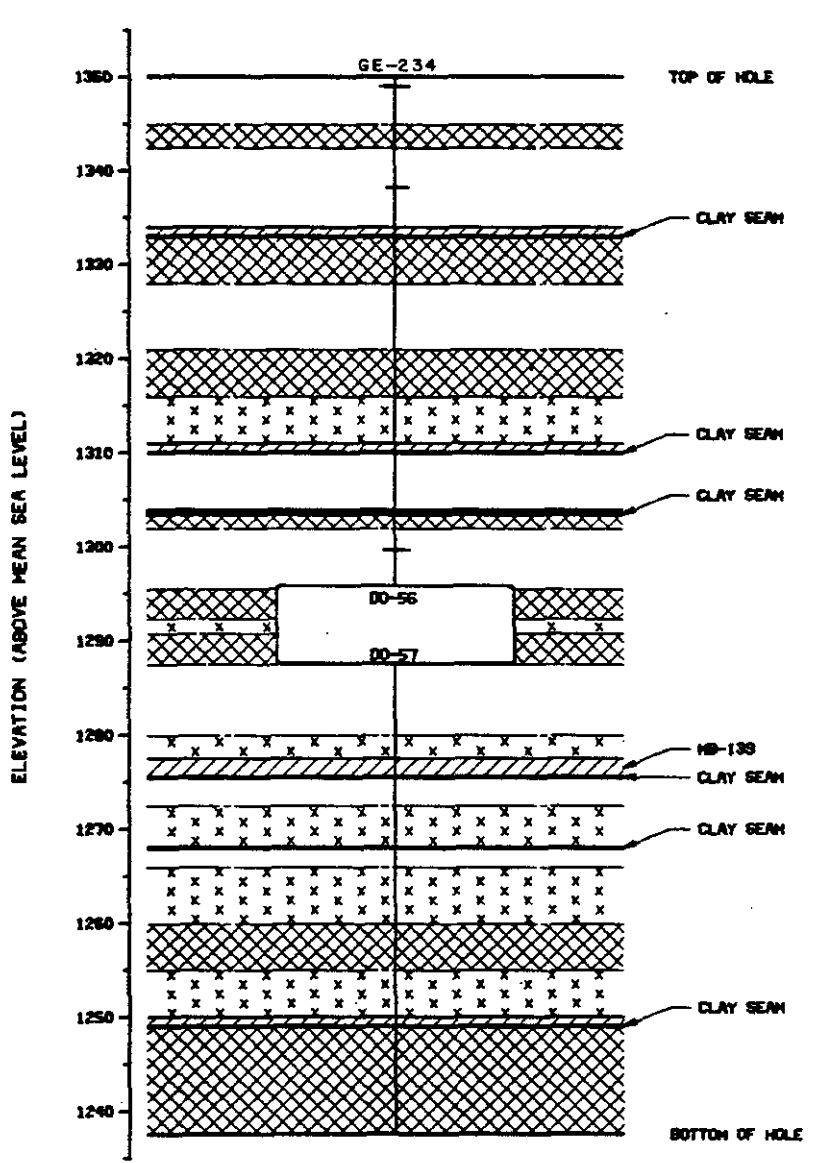
LEGEND

- INSTRUMENTS**
- +--- GE - EXTENSOMETER (MULTIPLE POINT)
  - DO - CORE DRILL HOLE
  - ▲ RC - RADIAL CONVERGENCE POINT
  - TC - TEMPORARY CONVERGENCE POINT
  - WG - ROCK BOLT LOAD CELL

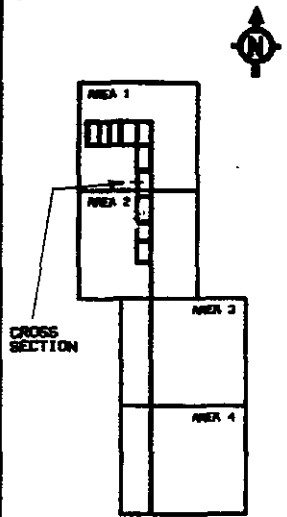
- GEOLOGY**
- CLEAR HALITE
  - ▨ ANHYDRITE
  - ▩ ARGILLACEOUS HALITE
  - ⊗ POLYHALTIC HALITE
  - ▤ POLYHALITE

EAST-WEST  
CROSS SECTION  
EO DRIFT AT N1110

FIGURE H-2



KEY PLAN



NOTES

LEGEND

INSTRUMENTS

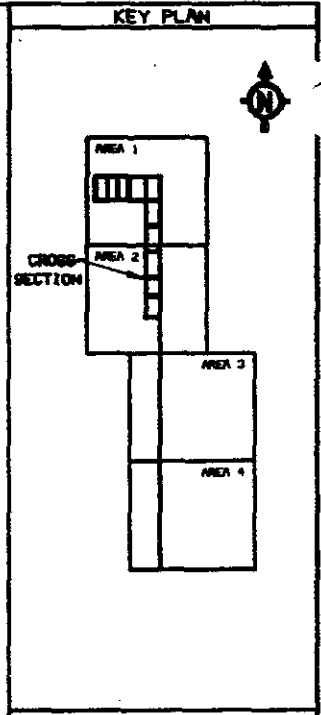
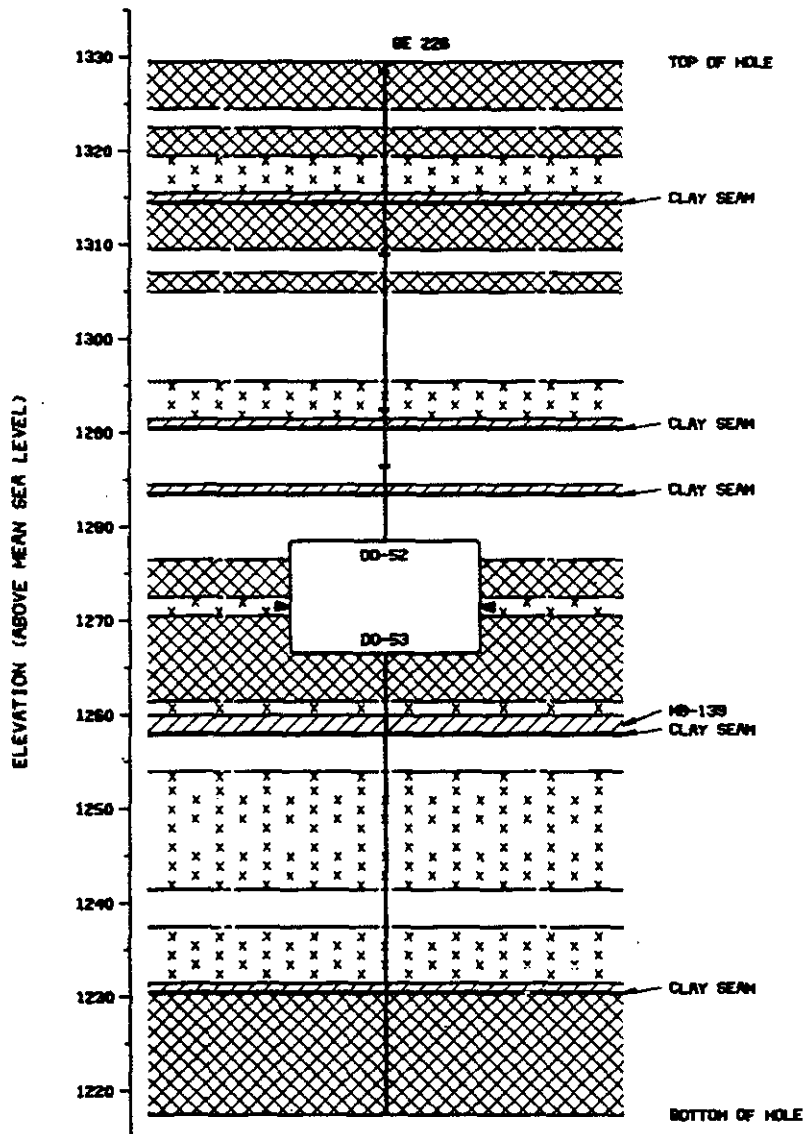
- GE - EXTENSOMETER (MULTIPLE POINT)
- DO - CORE DRILL HOLE
- RC - RADIAL CONVERGENCE POINT
- TC - TEMPORARY CONVERGENCE POINT
- WG - ROCK BOLT LOAD CELL

GEOLOGY

- CLEAR HALITE
- ANHYDRITE
- ARGILLACEOUS HALITE
- POLYHALITIC HALITE
- POLYHALITE

EAST-WEST  
CROSS-SECTION  
EO DRIFT AT N621

FIGURE H-3



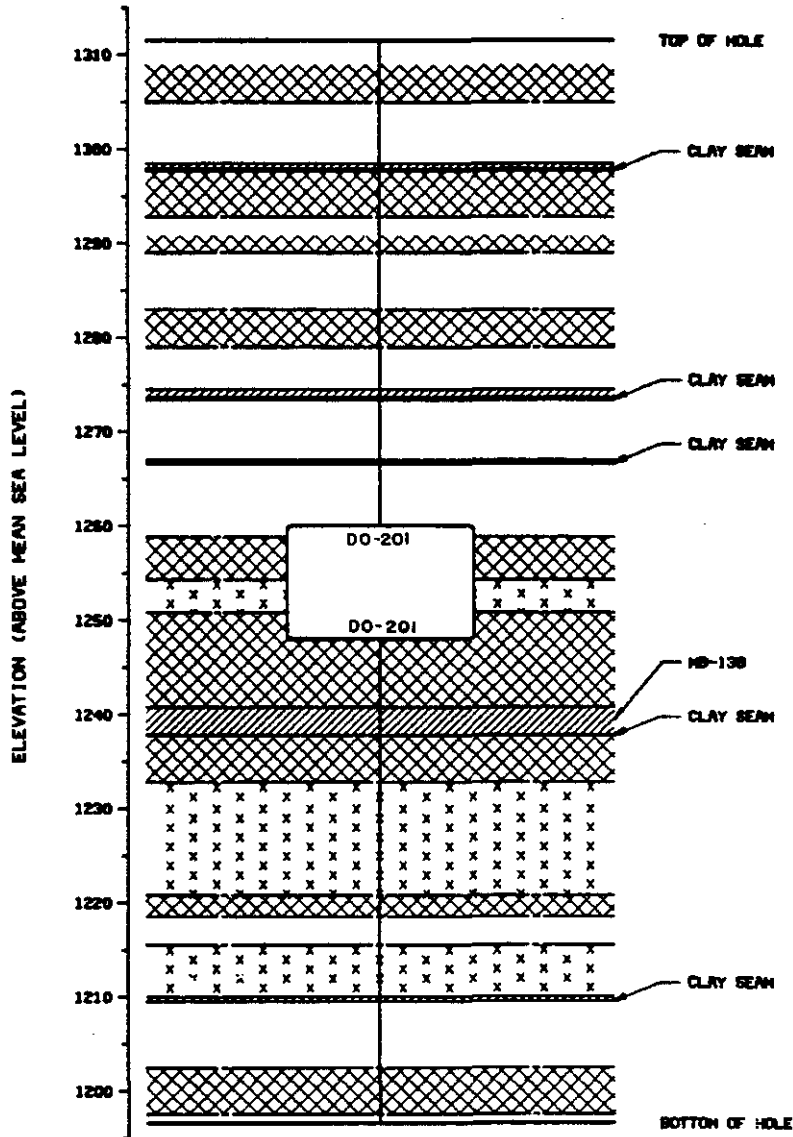
NOTES

- LEGEND**
- INSTRUMENTS**
- GE - EXTENSOMETER (MULTIPLE POINT)
  - DO - CORE DRILL HOLE
  - ◀ RC - RADIAL CONVERGENCE POINT
  - TC - TEMPORARY CONVERGENCE POINT
  - WG - ROCK BOLT LOAD CELL

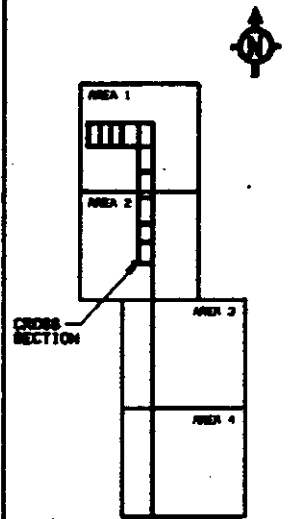
- GEOLOGY**
- CLEAR HALITE
  - ▨ ANHYDRITE
  - ▩ ARGILLACEOUS HALITE
  - ⊗ POLYHALITIC HALITE
  - POLYHALITE

**EAST-WEST  
CROSS SECTION  
EO DRIFT AT N146**

**FIGURE H-4**



KEY PLAN



NOTES

LEGEND

INSTRUMENTS

- ++++ GE - EXTENSOMETER (MULTIPLE POINT)
- DO - CORE DRILL HOLE
- ◀ RC - RADIAL CONVERGENCE POINT
- TC - TEMPORARY CONVERGENCE POINT
- WG - ROCK BOLT LOAD CELL

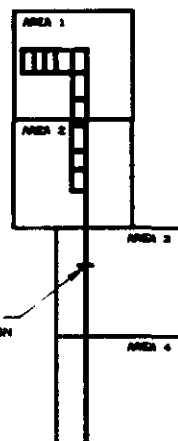
GEOLOGY

- CLEAR HALITE
- ▨ ANHYDRITE
- ▩ ARGILLACEOUS HALITE
- ⊗ POLYHALTIC HALITE
- POLYHALITE

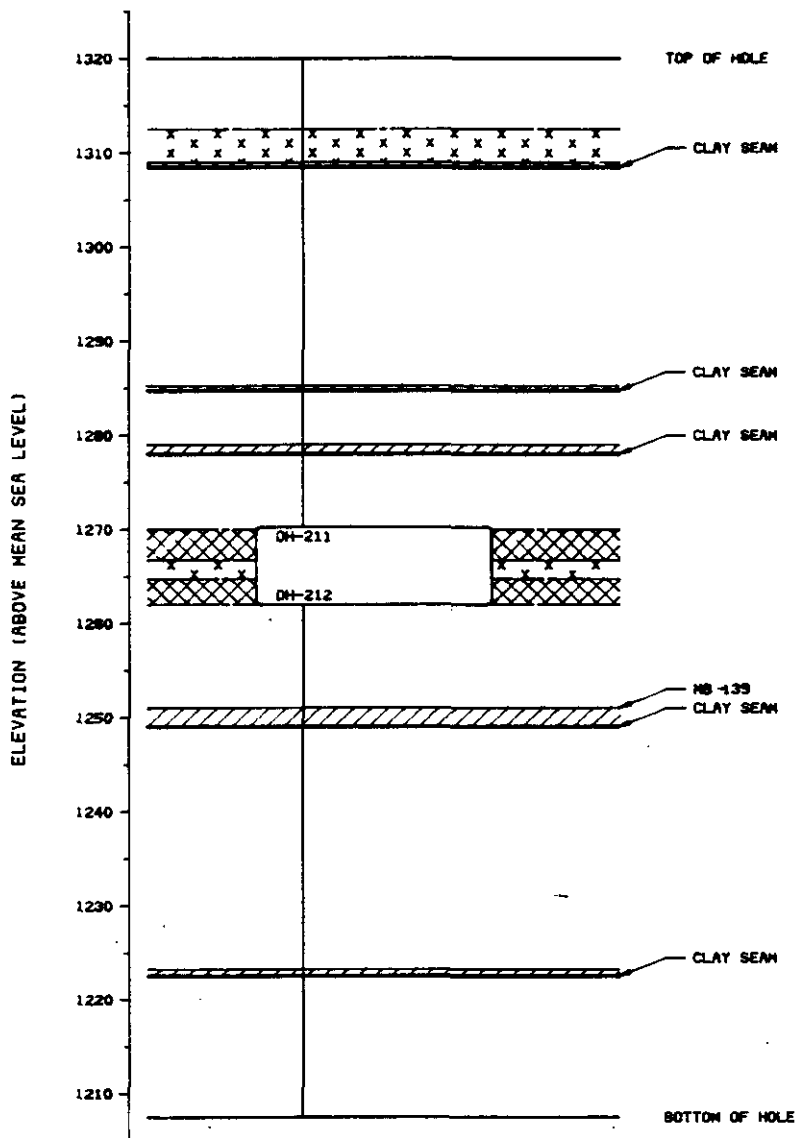
EAST-WEST  
CROSS SECTION  
W30 DRIFT AT S406

FIGURE H-5

KEY PLAN



CROSS SECTION



NOTES

LEGEND

INSTRUMENTS

- GE - EXTENSOMETER (MULTIPLE POINT)
- DH - CORE DRILL HOLE
- RC - RADIAL CONVERGENCE POINT
- TC - TEMPORARY CONVERGENCE POINT
- WG - ROCK BOLT LOAD CELL

GEOLOGY

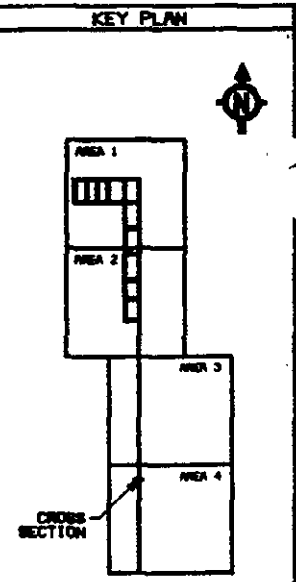
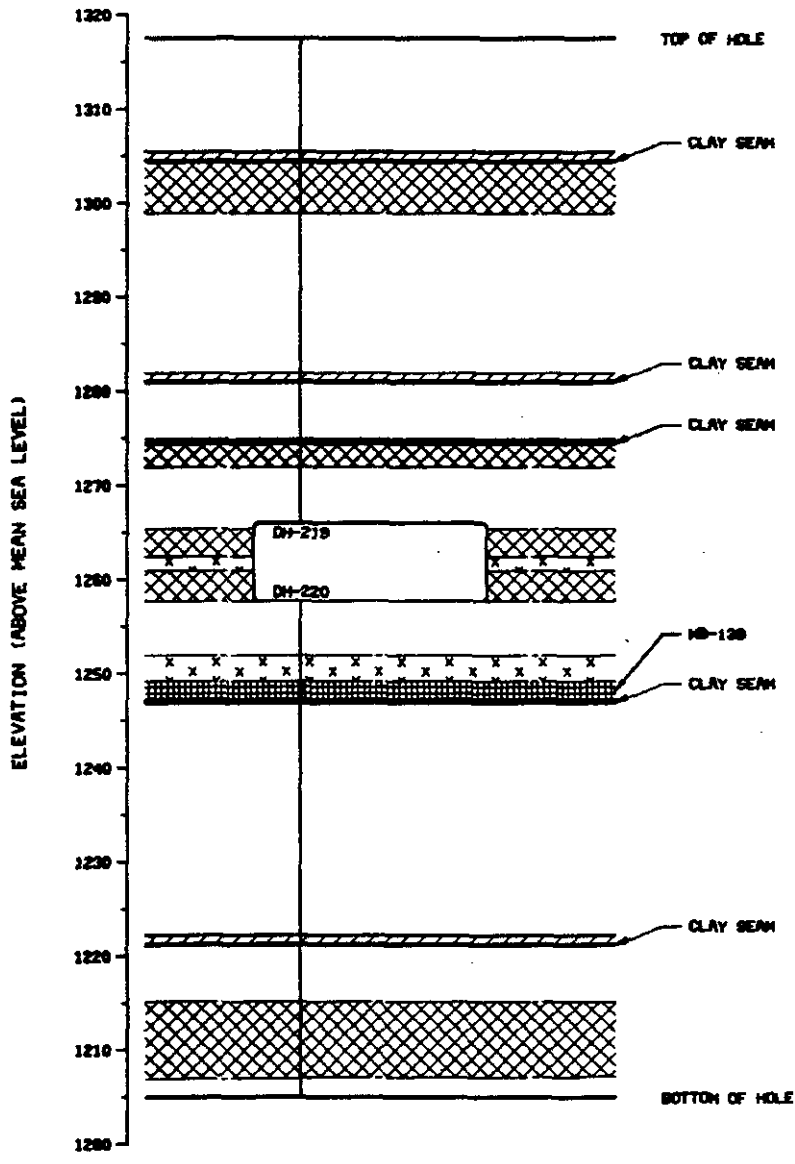
- CLEAR HALITE
- ANHYDRITE
- ARGILLACEOUS HALITE
- POLYHALTIC HALITE
- POLYHALITE

EAST-WEST  
CROSS SECTION  
E140 DRIFT AT S1320

FIGURE H-6







**NOTES**

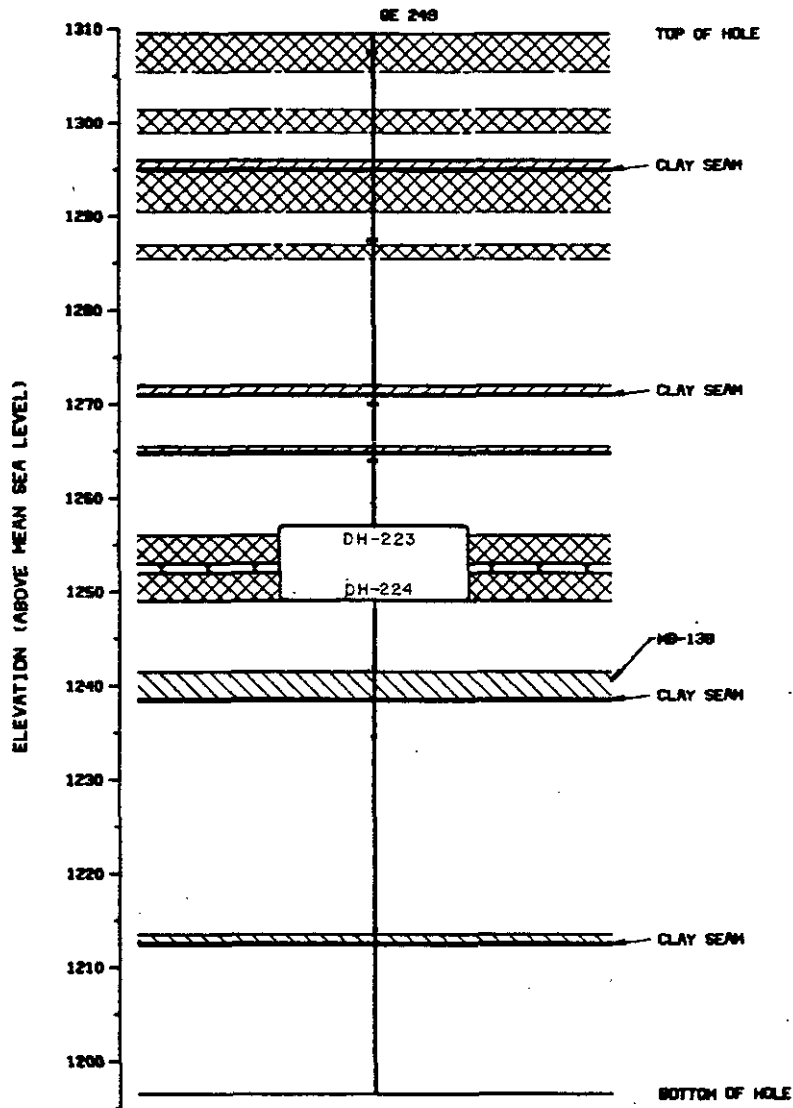
**LEGEND**

- INSTRUMENTS**
- +--- GE - EXTENSOMETER (MULTIPLE POINT)
  - DH - CORE DRILL HOLE
  - ◀ RC - RADIAL CONVERGENCE POINT
  - TC - TEMPORARY CONVERGENCE POINT
  - WG - ROCK BOLT LOAD CELL

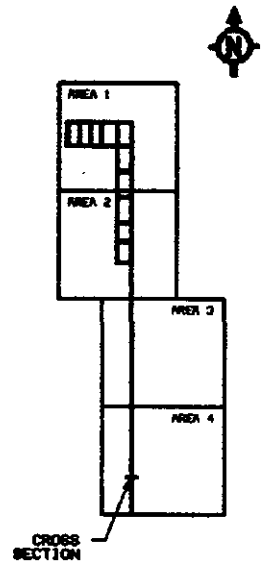
- GEOLOGY**
- CLEAR HALITE
  - ▨ ANHYDRITE
  - ▩ ARGILLACEOUS HALITE
  - ⊗ POLYHALITIC HALITE
  - POLYHALITE

**EAST-WEST CROSS SECTION E140 DRIFT AT S242**

**FIGURE H-8**



KEY PLAN



NOTES

LEGEND

INSTRUMENTS

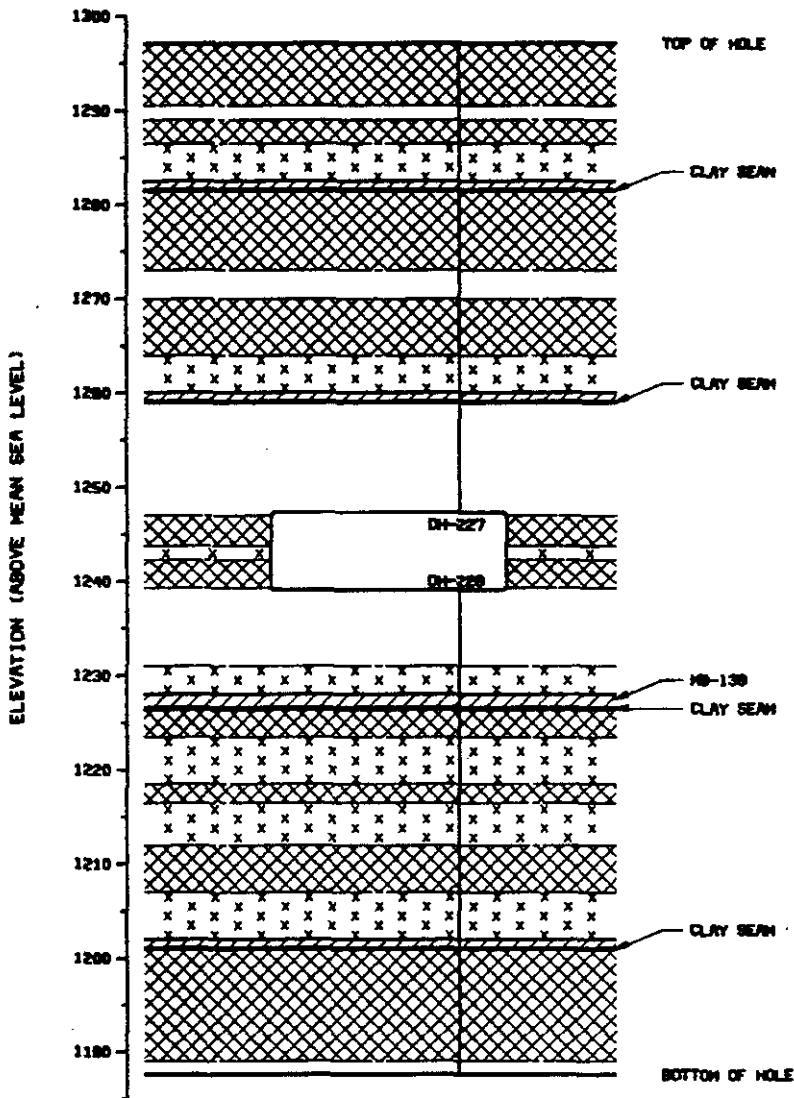
- +--- GE - EXTENSOMETER (MULTIPLE POINT)
- DH - CORE DRILL HOLE
- ◀ RC - RADIAL CONVERGENCE POINT
- TC - TEMPORARY CONVERGENCE POINT
- WG - ROCK BOLT LOAD CELL

GEOLOGY

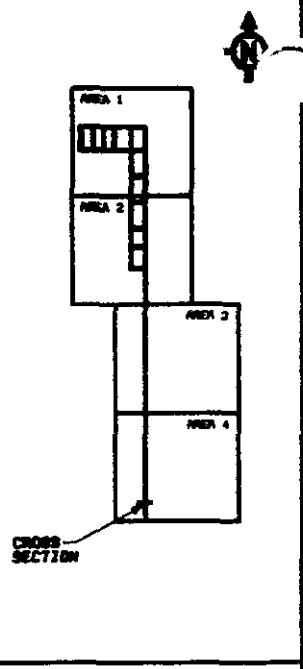
- CLEAR HALITE
- ▨ ANHYDRITE
- ▩ ARGILLACEOUS HALITE
- ⊗ POLYHALTIC HALITE
- ▣ POLYHALITE

EAST-WEST  
CROSS SECTION  
E140 DRIFT AT S3079

FIGURE H-9



KEY PLAN



NOTES

LEGEND

- INSTRUMENTS**
- +—+—+— GE - EXTENSOMETER (MULTIPLE POINT)
  - DH - CORE DRILL HOLE
  - RC - RADIAL CONVERGENCE POINT
  - TC - TEMPORARY CONVERGENCE POINT
  - WG - ROCK BOLT LOAD CELL
- GEOLOGY**
- CLEAR HALITE
  - ▨ ANHYDRITE
  - ▩ ARGILLACEOUS HALITE
  - ⊗ POLYHALITIC HALITE
  - POLYHALITE

EAST-WEST  
CROSS SECTION  
E140 DRIFT AT S3656  
FIGURE H-10