

Class 1 Permit Modification

Correct Figures to Reflect the Ability to Use Panel 4 for Waste Disposal

**Waste Isolation Pilot Plant
Carlsbad, New Mexico**

WIPP HWFP #NM4890139088-TSDF

Table of Contents

Transmittal Letter	
Table of Contents	i
Acronyms and Abbreviations	ii
Overview of the Permit Modification Notification	1
Attachment A	A-1
Table 1. Class 1 Hazardous Waste Facility Permit Modification Notification	A-2
Item 1	A-3
Description	A-3
Basis	A-3
Discussion	A-3
Revised Permit Text	A-3
Attachment B	B-1
Revised Figures	

Acronyms and Abbreviations

CBFO	Carlsbad Field Office
CFR	Code of Federal Regulations
DOE	Department of Energy
HWFP	Hazardous Waste Facility Permit
NMAC	New Mexico Administrative Code
NMED	New Mexico Environment Department
PMN	Permit Modification Notification
RCRA	Resource Conservation and Recovery Act
TSDf	Treatment, Storage and Disposal Facility
WIPP	Waste Isolation Pilot Plant
WTS	Washington TRU Solutions LLC

Overview of the Permit Modification Notification

This document contains a Class 1 Permit Modification Notification (**PMN**) to the Hazardous Waste Facility Permit (**HWFP**) at the Waste Isolation Pilot Plant (**WIPP**), Permit Number NM4890139088-TSDF hereinafter referred to as the WIPP HWFP.

This PMN is being submitted by the U.S. Department of Energy (**DOE**), Carlsbad Field Office (**CBFO**) and Washington TRU Solutions LLC (**WTS**), collectively referred to as the Permittees, in accordance with the WIPP HWFP, Condition I.B.1 (20.4.1.900 New Mexico Administrative Code (**NMAC**) incorporating Title 40 of the Code of Federal Regulations (40 **CFR**) §270.42(a)). The PMN in this document is necessary for the following reasons:

- correct figures to show that Panel 4 is approved by the New Mexico Environment Department (**NMED**) for waste disposal

These changes do not reduce the ability of the Permittees to provide continued protection to human health and the environment.

The requested modification to the WIPP HWFP and related supporting documents are provided in this PMN. The proposed modification to the text of the WIPP HWFP has **been identified using a double underline** and revision bar in the right hand margin for added information, and a ~~strikeout~~ font for deleted information. All direct quotations are indicated by italicized text.

Attachment A

Description of the Class 1 Permit Modification Notification

Table 1. Class 1 Hazardous Waste Facility Permit Modification Notification

No.	Affected Permit Section	Item	Category	Attachment A Page #
1	a. Attachment F, Attachment I, Attachment I2, Attachment M2 Attachment N Attachment O	Update figures to reflect Panel 4 is in use	A.1	A-3

Item 2

Description:

Panel 4 has been approved by the NMED for receipt of hazardous waste. Figures in the HWFP must be revised to indicate that Panel 4 is now an active hazardous waste disposal unit.

Basis:

The change is an administrative and informational change to the HWFP and therefore is a Class 1 notification pursuant to 20.4.1.900 NMAC (incorporating 40 CFR 270.42, Appendix I, A.1).

Discussion:

On October 20, 2006, the Permittees certified that Panel 4 was complete and ready to accept waste. Panel 4 was inspected by the NMED on November 9, 2006. Panel 4 was approved by the NMED on December 20, 2006. As a result of these actions various figures in the HWFP must be revised to reflect that Panel 4 is now an active hazardous waste disposal unit. These figures appear in Attachments F, I, I2, M2, N and O.

Revised Permit Text:

- a.1. Attachment F, Figures F-3, F-5 and F-9

Figures F-3, F-5 and F-9 have been revised to indicate that Panel 4 is an active hazardous waste disposal unit. The revised figures are included in Attachment B.

- a.2. Attachment I, Figure I-1

Figure I-1 has been revised to indicate that Panel 4 is an active hazardous waste disposal unit. The revised figure is included in Attachment B.

- a.3. Attachment I2, Figure I2-1

Figure I2-1 has been revised to indicate that Panel 4 is an active hazardous waste disposal unit. The revised figure is included in Attachment B.

- a.4. Attachment M2, Figure M2-1

Figure M2-1 has been revised to indicate that Panel 4 is an active hazardous waste disposal unit. The revised figure is included in Attachment B.

a.5. Attachment N, Figure N-1

Figure N-1 has been revised to indicate that Panel 4 is an active hazardous waste disposal unit. The revised figure is included in Attachment B.

a.6. Attachment O, Figure O3-2

Figure O3-2 has been revised to indicate that Panel 4 is an active hazardous waste disposal unit. The revised figure is included in Attachment B.

ATTACHMENT B
REVISED FIGURES

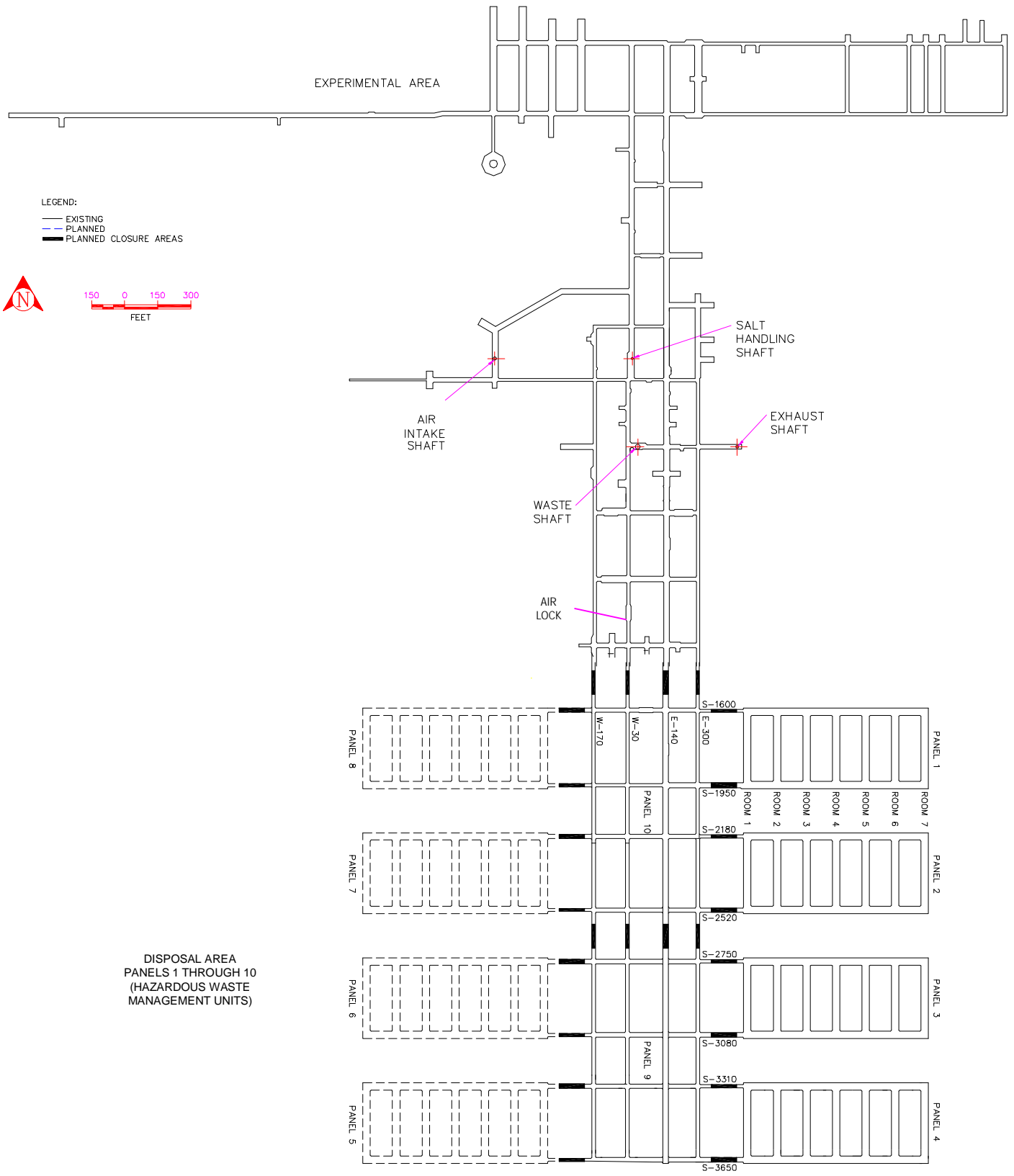


Figure F-3
WIPP Underground Facilities

GENERAL INSTRUCTIONS

ANY TIME AN EVACUATION ALARM IS SOUNDED PROCEED TO THE NEAREST EGRESS HOIST STATION.

ALL CARTS, TRUCKS, ETC. WILL BE PARKED.

CONTACT THE CMR VIA MINE PAGER PHONE, DIAL PHONE, OR GATRONICS ON DIRECTION FROM THE CMR OPERATOR, PROCEED ON FOOT TO THE NEAREST EGRESS HOIST STATION.

INFORMATION


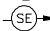
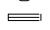















PRIMARY ESCAPE - INTAKE AIR - GREEN REFLECTIVE MARKERS INDICATE YOU ARE HEADING TOWARD A SHAFT IN INTAKE AIR

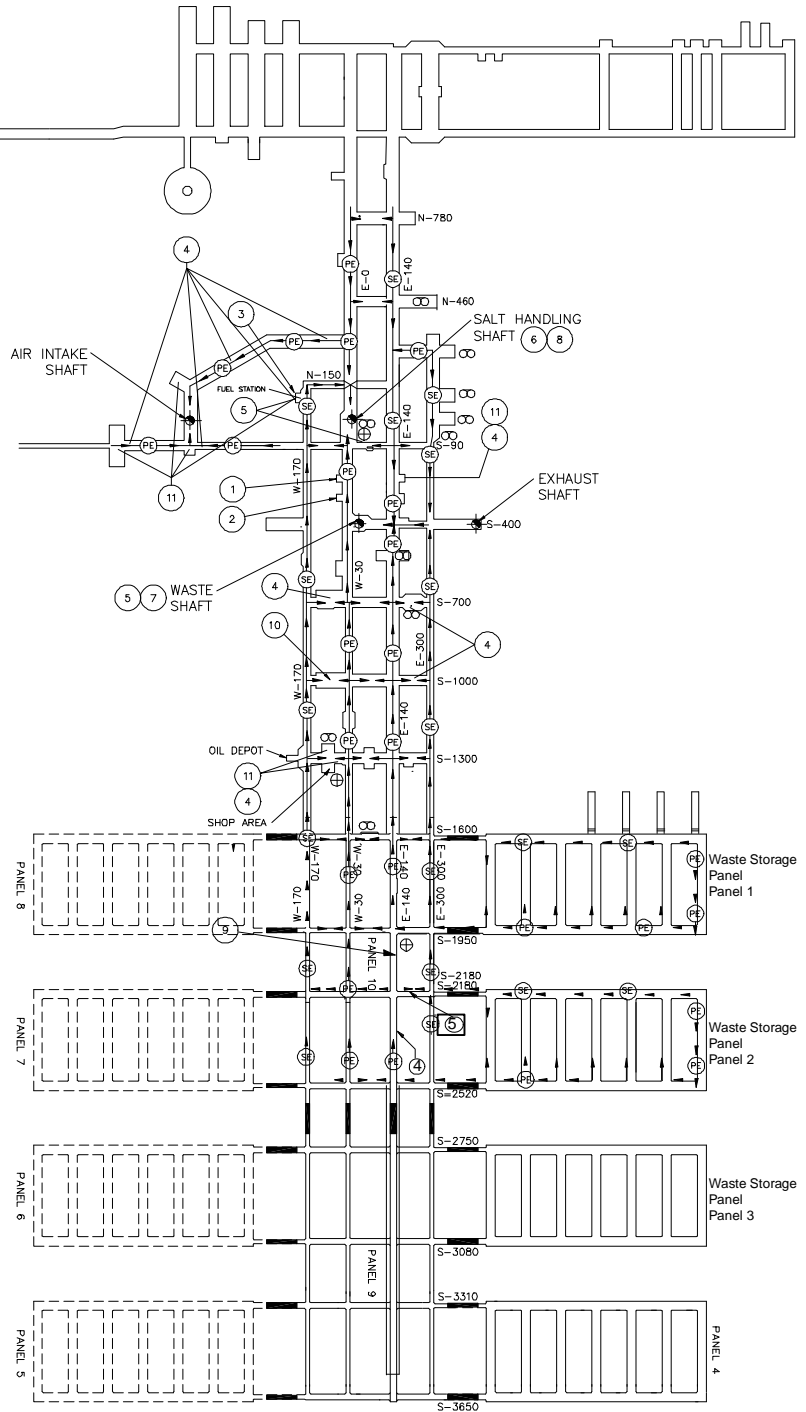
SECONDARY ESCAPE - EXHAUST AIR - RED REFLECTIVE MARKERS INDICATE YOU ARE HEADING TOWARD A SHAFT IN EXHAUST AIR

WHITE REFLECTIVE MARKERS INDICATE YOU ARE IN INTAKE AIR OR EXHAUST AIR HEADING AWAY FROM A SHAFT

NOTE:
SECONDARY ESCAPE ROUTE WILL ONLY BE USED UNTIL CLEAR ACCESS AT A BULKHEAD PAST THE BLOCKED AREA TO THE PRIMARY ACCESS ROUTE IS FOUND.

LEGEND

-  PRIMARY ESCAPEWAY
-  SECONDARY ESCAPEWAY
-  UNPASSABLE BULKHEAD (PROHIBITED AREA)
-  VERTICAL SHAFT
-  OVERCAST
-  FIRST AID STATION (PHONE)
-  EYE WASH STATION
-  1 AMBULANCE
-  2 RESCUE TRUCK
-  3 DRY CHEMICAL SYSTEM
-  4 FIRE ALARM HAND SWITCH (PHONE)
-  5 FIRE ALARM PANEL
-  6 SH SHAFT UNDERGROUND STATION EMERGENCY AREA (PHONE)
-  7 WASTE SHAFT UNDERGROUND STATION ASSEMBLY AREA (PHONE)
-  8 SALT HANDLING SHAFT ASSEMBLY AREA (PHONE)
-  9 S-1950 & E-140 ASSEMBLY AREA (PHONE)
-  10 S-1000 ASSEMBLY AREA (PHONE)
-  11 THERMAL DETECTOR



EMERGENCY/ALARM RESPONSE

CONTACT CMR BY MINE PAGER PHONE OR GATRONIC HANDSET OR
CMR EXTENSION 8111
IDENTIFY TYPE OF EMERGENCY AND LOCATION

PERSONNEL REPORT TO THE NEAREST EGRESS HOIST STATION FOR UNDERGROUND EVACUATION

PERSONNEL REPORT TO THE NEAREST DESIGNATED ASSEMBLY AREA FOR OTHER SITE EMERGENCIES AND CMR ESCAPE ROUTE INSTRUCTIONS

DURING AN EMERGENCY/ALARM RESPONSE PERSON-IN-CHARGE IS THE U/G FE

Figure F-5
Underground Emergency Equipment Locations and Underground Evacuation Routes

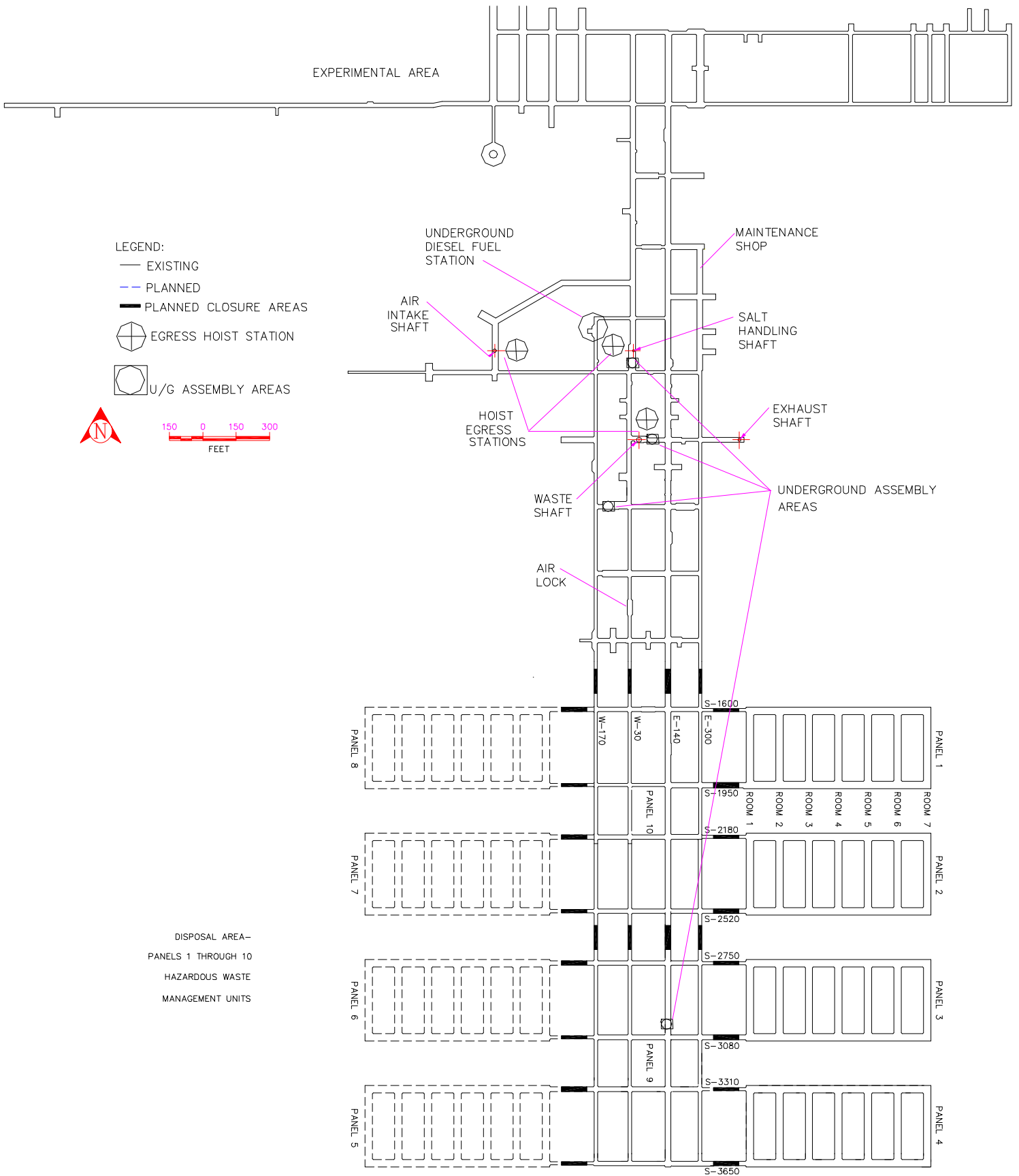


Figure F-9
Designated Underground Assembly Areas

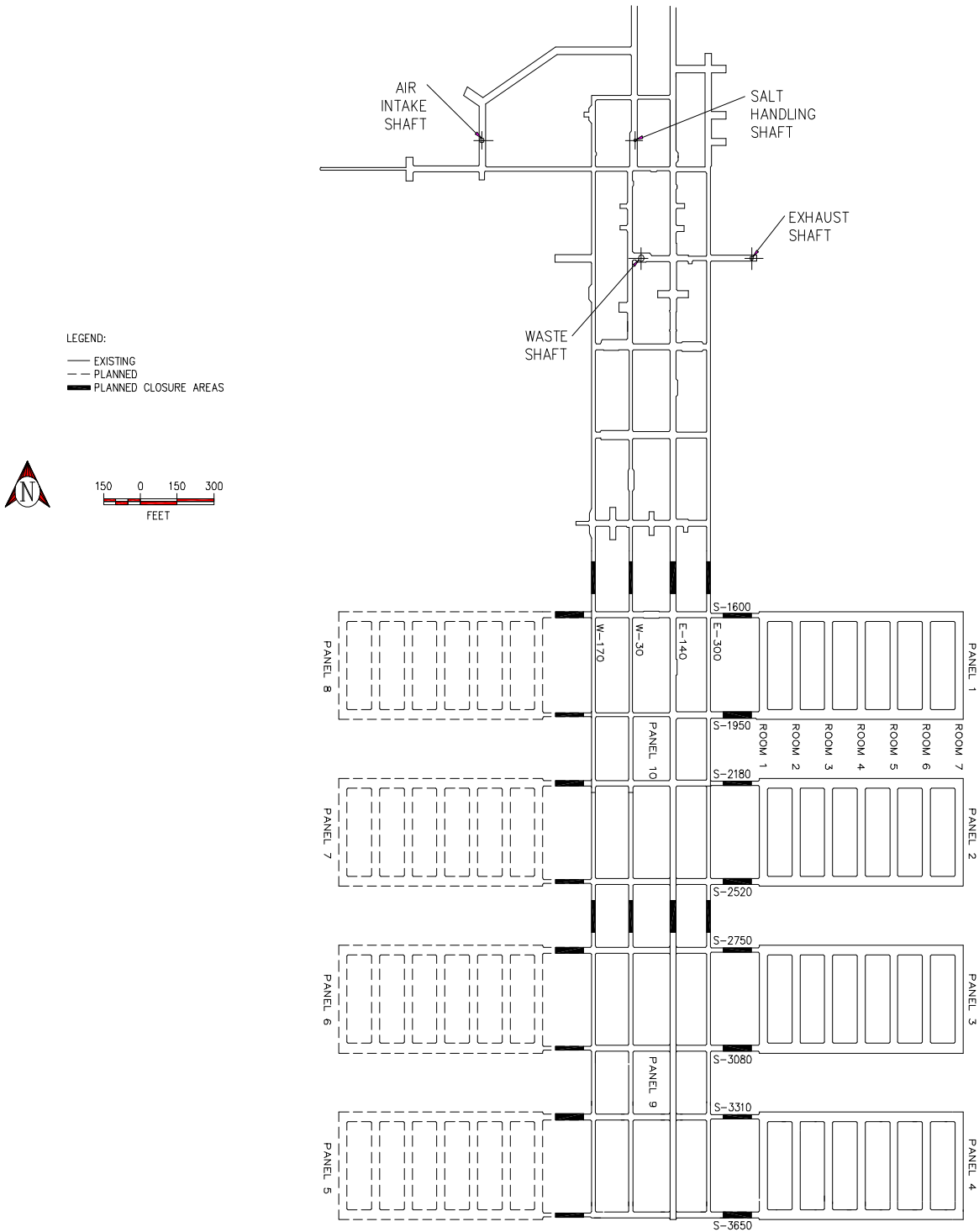


Figure I-1
 Location of Underground HWDUs and Anticipated Closure Locations

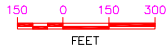
WIPP-19

WIPP-22

EXPERIMENTAL AREA

LEGEND:

- EXISTING
- - - PLANNED
- █ PLANNED CLOSURE AREAS



BOREHOLE	DEPTH (FT)
ERDA-9	2878
WIPP-19	1038
WIPP-21	1049
WIPP-22	1450
B-25	902
H-1	848
H-2c	795
H-3b1	902
H-16	851
P-3	1576

REPOSITORY DEPTH: 2150 FEET

P-3

WIPP-21

H-16

AIR INTAKE SHAFT

B-25

WASTE SHAFT

SALT HANDLING SHAFT

EXHAUST SHAFT

ERDA-9 BORE HOLE

H-1

H-2c

DISPOSAL AREA



H-3b1

Figure I-6
Approximate Location of Boreholes in Relation to the WIPP Underground

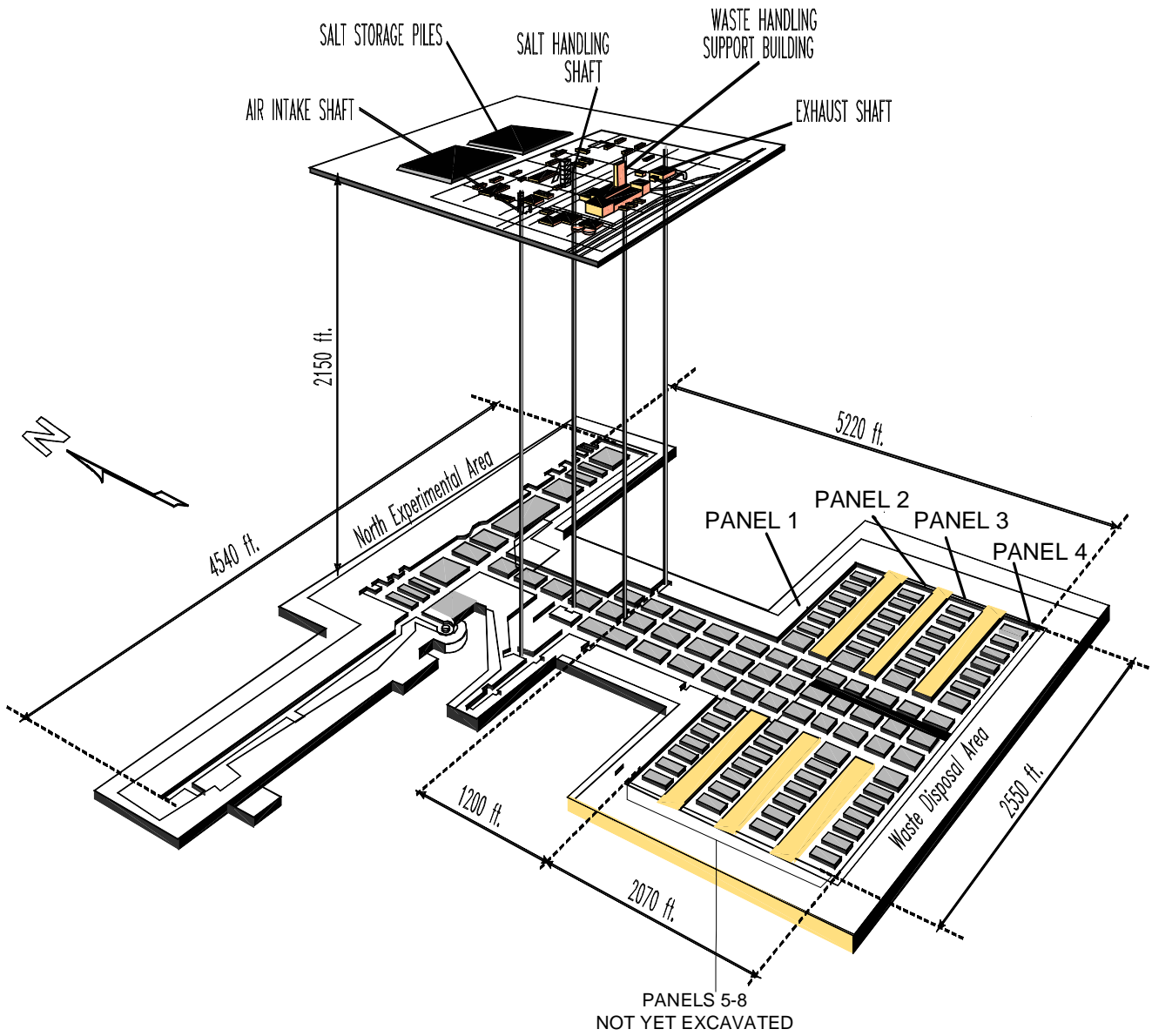


Figure I2-1
View of the WIPP Underground Facility

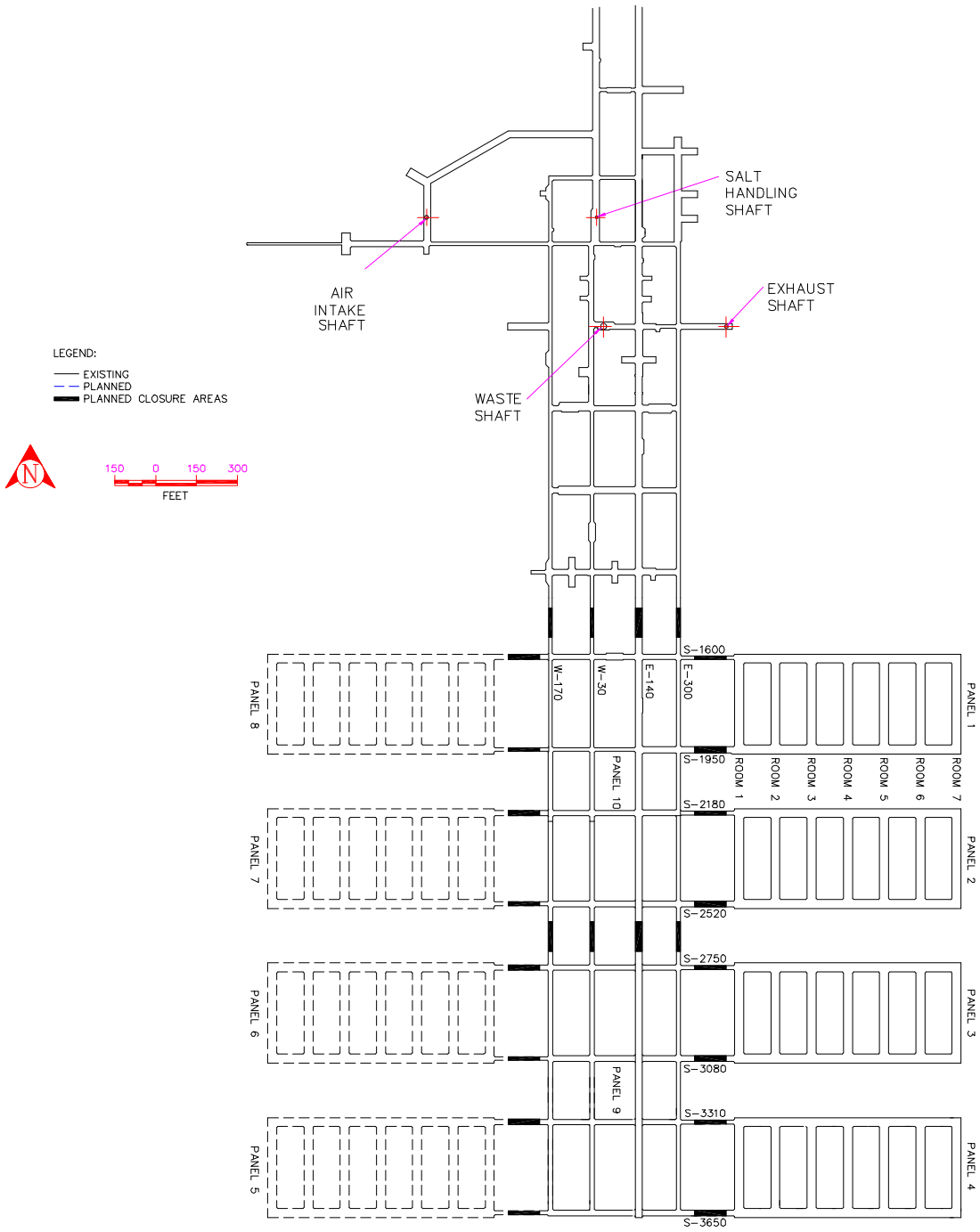


Figure M2-1
Repository Horizon

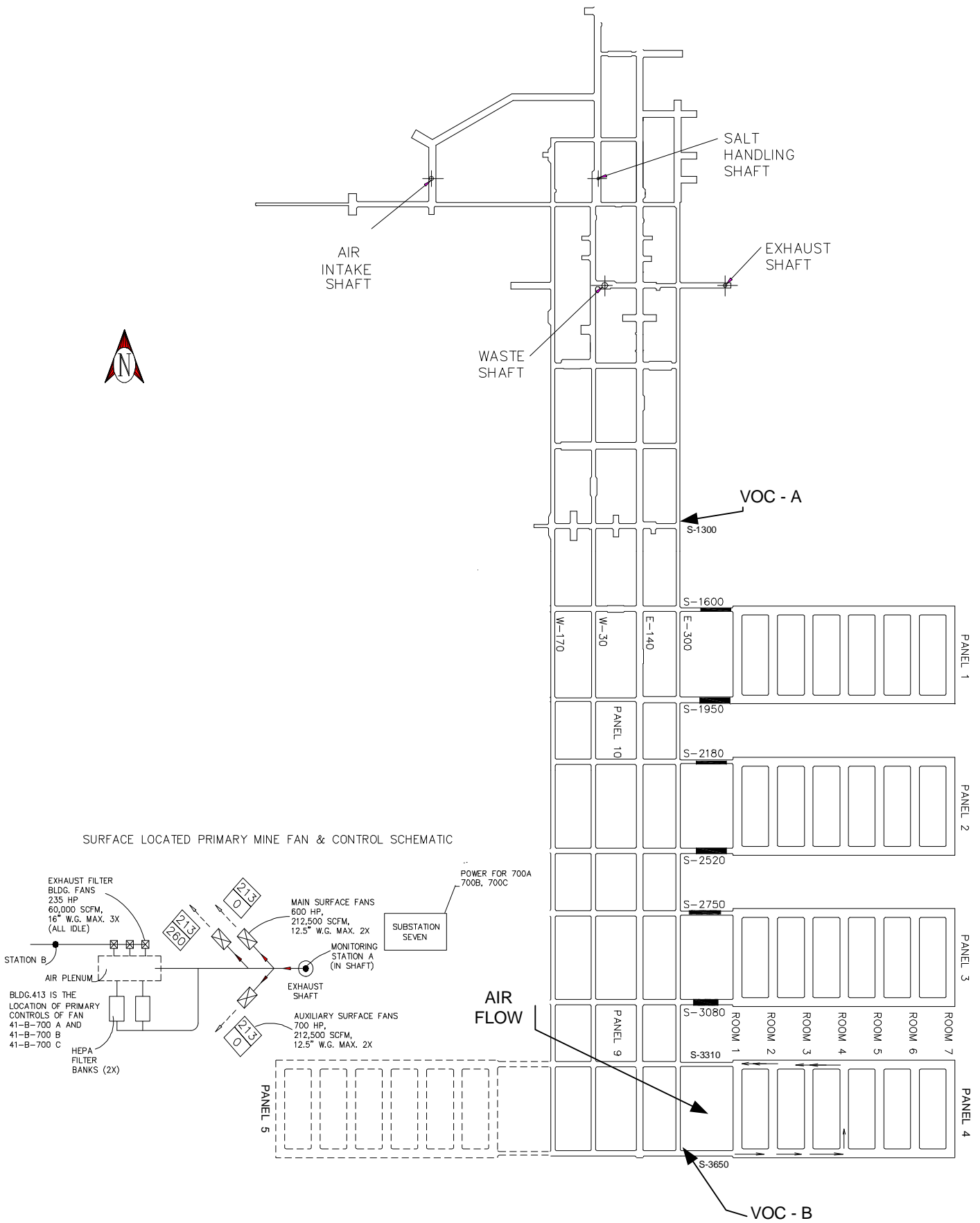


Figure N-1
Panel Flow Area

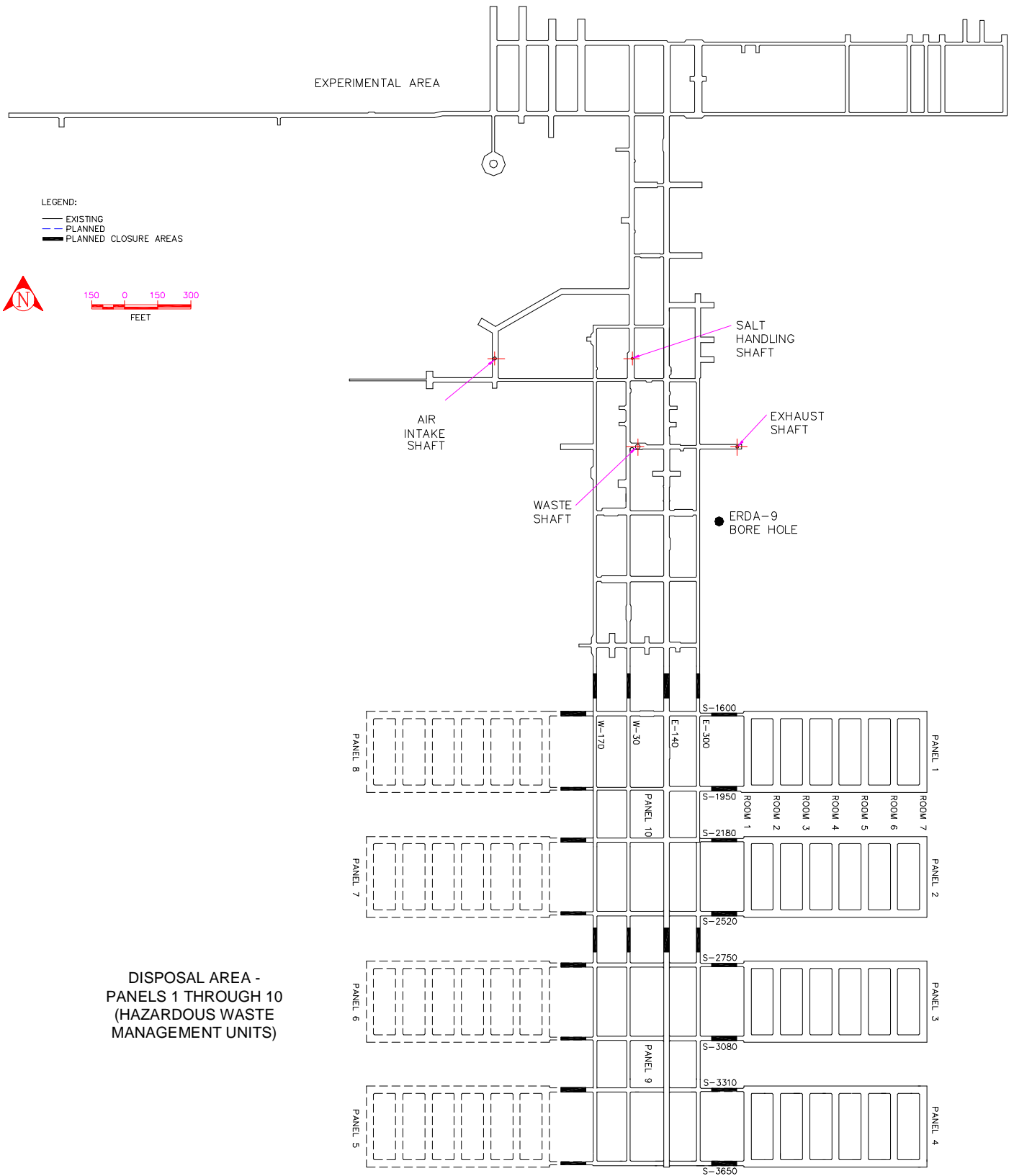


Figure 03-2
Repository Horizon