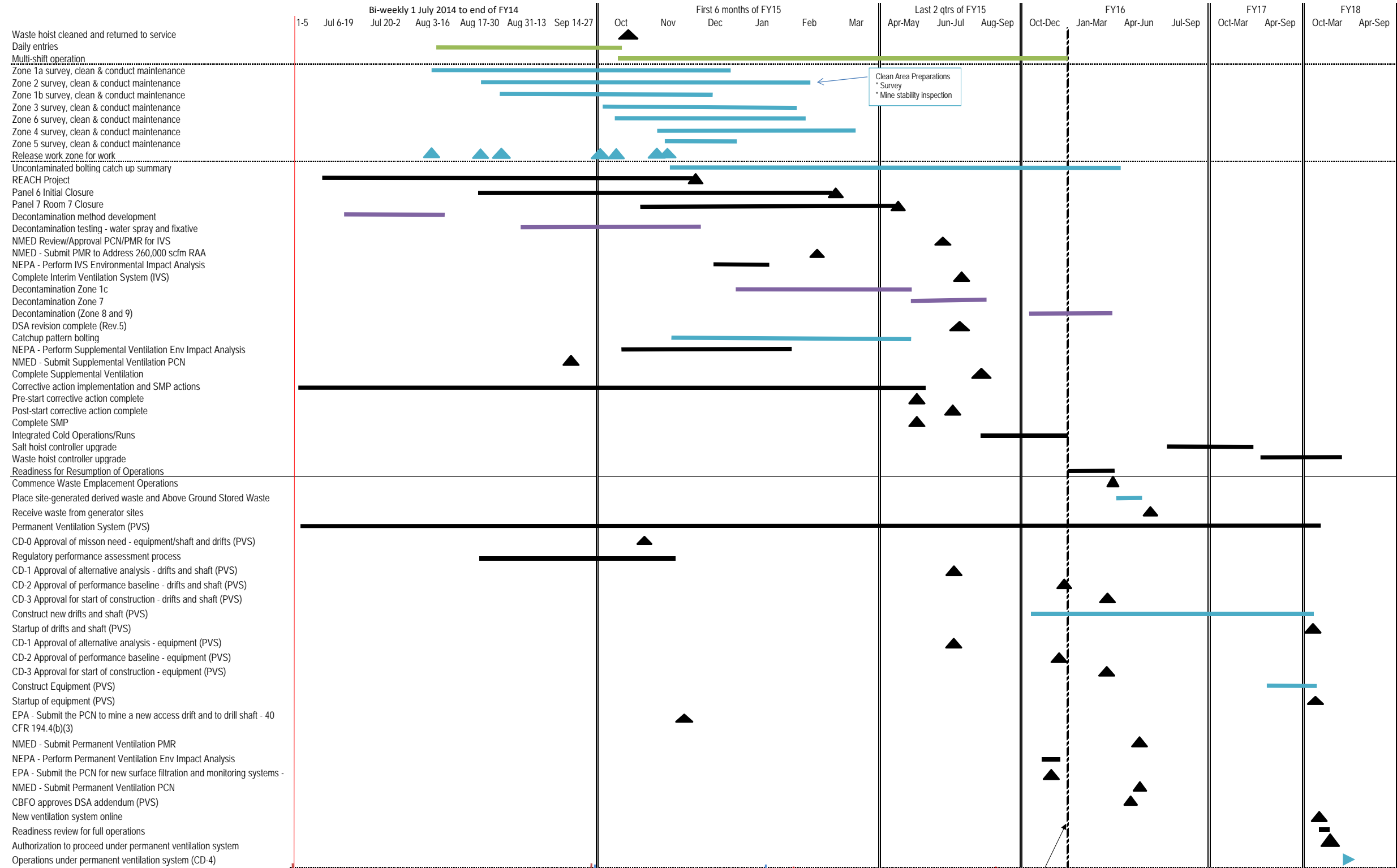


WIPP Recovery Plan Summary Schedule, Rev. 3 Schedule



Footnote for Zone Descriptions
Zone 1a: Drift W30 from S90 to S700, Drift E140 from S700 to S90
Zone 2: Area around the waste shaft station
Zone 1b: Drift W30 from S700 to S1950, Drift E140 from S1950 to S700, and cross drifts at S1000, S1300, S1600 and S1950
Zone 3: Drifts from S-400 to N-1100
Zone 6: Exhaust shaft area and other areas
Zone 4: Experimental areas
Zone 5: Panel 8
Zone 1c: Drift W30 from S1950 to S3080, Drift E140 from S3080 to S1950, and cross drifts at S2180, S2520, S2750 and S3080
Zone 7: Panel 7 including rooms 1 to 7 and the exhaust drifts
Zone 8 and Zone 9: Contaminated areas at the south end of the mine with boundaries defined by characterization: The exhaust drift and exhaust shaft

Footnote for Permanent ventilation system
 Detail activities are located in the "Permanent Vent Sys" Project

Limited entry due to necessary waste hoist servicing
 Limited air through existing HEPA system
 Interim ventilation through skid mounted HEPA unit
 Supplemental ventilation
 New ventilation system operational

Current regulatory milestone for panel 1-6 final closure

Bar Legend

- Hoisting
- Operations
- Decontamination
- Other