

WPO-24609

6331

Lappini  
(loan)

## CONTRACTOR REPORT

SAND84-7178  
Unlimited Release  
UC-70

# Assessment of Near-Surface Dissolution At and Near the Waste Isolation Pilot Plant (WIPP), Southeastern New Mexico

George O. Bachman, Consultant  
Star Route, Box 1028  
Corrales, NM 87048

Prepared by Sandia National Laboratories Albuquerque, New Mexico 87185  
and Livermore, California 94550 for the United States Department of Energy  
under Contract DE-AC04-76DP00789

Printed July 1985

PROPERTY WMT LIBRARY

Information Only

SWCF-A: SA 1.4.3.3; Pub 84-7178

Issued by Sandia National Laboratories, operated for the United States Department of Energy by Sandia Corporation.

**NOTICE:** This report was prepared as an account of work sponsored by an agency of the United States Government. Neither the United States Government nor any agency thereof, nor any of their employees, nor any of their contractors, subcontractors, or their employees, makes any warranty, express or implied, or assumes any legal liability or responsibility for the accuracy, completeness, or usefulness of any information, apparatus, product, or process disclosed, or represents that its use would not infringe privately owned rights. Reference herein to any specific commercial product, process, or service by trade name, trademark, manufacturer, or otherwise, does not necessarily constitute or imply its endorsement, recommendation, or favoring by the United States Government, any agency thereof or any of their contractors or subcontractors. The views and opinions expressed herein do not necessarily state or reflect those of the United States Government, any agency thereof or any of their contractors or subcontractors.

Printed in the United States of America  
Available from  
National Technical Information Service  
U.S. Department of Commerce  
5285 Port Royal Road  
Springfield, VA 22161

NTIS price codes  
Printed copy: A02  
Microfiche copy: A01

PROPERTY WMT LIBRARY

**Information Only**

# **Assessment of Near-Surface Dissolution At and Near the Waste Isolation Pilot Plant (WIPP), Southeastern New Mexico**

George O. Bachman, Consultant  
Star Route, Box 1028  
Corrales, NM 87048

## **Abstract**

The area at and near the WIPP site was examined for evidence of karst development on the geomorphic surface encompassing the site. Certain surficial depressions of initial concern were identified as blowouts in sand dune fields (shallow features unrelated to karstification). An ancient stream system active more than 500,000 yr ago contained more water than any system since. During that time (Gatuña, Middle Pleistocene), many karst features such as Clayton Basin and Nash Draw began to form in the region. Halite was probably dissolved from parts of the Rusler Formation at that time. Dissolution of halite and gypsum from intervals encountered in Borehole WIPP-33 west of the WIPP site occurred during later Pleistocene time (i.e., <450,000 yr ago). However, there is no evidence of active near-surface dissolution within a belt to the east of WIPP-33 in the vicinity of the WIPP shaft.

## **Acknowledgments**

Funding for this study was provided by Sandia National Laboratories (Agreement 48-9558). Sue-Ellen Shaffer, Sandia National Laboratories, assisted in the field work.

# Contents

Foreword .....	7
Introduction .....	9
Physiography .....	9
Geology .....	10
Stratigraphy .....	11
Tertiary Deposits .....	14
Introduction .....	14
Ogallala Formation .....	14
Pleistocene Deposits .....	14
Gatuña Formation .....	14
Mescalero Caliche .....	19
Berino Soil .....	20
Spring Deposits .....	20
Playa Deposits .....	21
Alluvium .....	21
Windblown Sand .....	21
Karst and Near-Surface Dissolution .....	23
Discussion and Conclusions .....	26
References .....	28

# Figures

1 Index map showing major features discussed in this report .....	10
2 Isopach map of Rustler Formation .....	13
3 Cross-bedded pebble conglomerate in channel deposit at base of Gatuña Formation .....	15
4 Isopach map of Gatuña Formation .....	16
5 Isopach map of Triassic rocks .....	17
6 Isopach map of Dewey Lake Red Beds .....	18
7 Mescalero caliche engulfing Triassic rocks .....	20
8 Coppice dune on skyline, on rim of blowout .....	22
9 Blowout in dune sand .....	22
10 Mud-cracked pan in bottom of blowout .....	23
11 Map showing distribution of Gatuña Formation (stippled) and probable course of streams during Gatuña time (arrows) .....	25

## Foreword

This report is a partial accounting of work by George O. Bachman on behalf of Sandia National Laboratories as part of continued characterization of surface geology at the Waste Isolation Pilot Plant (WIPP) site. Mr. Bachman is writing a series of reports on various aspects of the surface and subsurface geology of the Delaware Basin of southeastern New Mexico. All these reports deal with dynamic geological processes as they affect the survivability of the evaporites in the Delaware Basin and the long-term integrity of the natural systems that must continue to isolate radioactive wastes emplaced in evaporites at the WIPP.

This report deals with the occurrence of the Quaternary Gatuña Formation at and near the WIPP site. In addition, the Gatuña Formation is placed into a context with respect to a major dissolution-subsidence feature (Nash Draw) and several other smaller collapse sinks. Logic leading to inferences about the origins of these various collapse features is not repeated here, as such description appears in detail in other reports by Mr. Bachman. Consequently, several of the statements made herein are not accompanied by the complete set of substantiating descriptions and discussions.

Several geomorphic features around the site (specifically, blowouts among sand dunes, sinkholes in gypsic terrain, and closed depressions at Boreholes WIPP-14 and WIPP-33) have been cited by Barrows and others (1983) as evidence of a pervasive geologic process of shallow- and deep-seated karst formation. This proposition arose from one possible interpretation of Bouguer gravity anomalies near the site. Whereas this report does not specifically attempt to reinterpret the gravity anomalies, it does make conclusions about the relationships between the paleoclimate, paleohydrology, distribution, and thickness of stream deposits of the Gatuña Formation, and about the near-surface paleodissolution in the Rustler

Formation. Channels in the Gatuña Formation may be important in interpreting the Bouguer gravity anomalies; the geological relationships described herein may suggest alternative explanations for the Bouguer gravity anomalies other than deep-seated pervasive karst. Whereas this report does not specifically attempt to evaluate all the various implications of karstic terrain with respect to groundwater movement, it provides some background for other reports that will directly discuss this issue, many of which will use laboratory and numerical methods as well as field mapping. In addition it concludes that "true karst features should not be predicted on the Livingston Ridge surface east of the indicated dissolution front in the Rustler," thus providing geographic bounds for the area of karstic processes in evaporites. This geographic constraint will be discussed further, together with the processes themselves, in a subsequent report.

This report is important to evaluating the long-term suitability of the WIPP in that it emphasizes the significance of conditions in the paleoclimate, paleohydrology, and paleodissolution that are quite different from presently observable conditions. These geological extremes over several thousand years can complicate interpretations of data representative of the present; one such set of interpretations has been specifically requested by the New Mexico Environmental Evaluation Group: the "water-balance study" (cf USDOE, 1983).

Finally, this report directly addresses another concern of the Environmental Evaluation Group: "drill a shallow auger-hole in the depression in the SW corner [of Sec. 29, T22S, R31E] in Zone III to address the suspicion of this depression being a doline" (cf USDOE, 1983).

Steven J. Lambert  
Sandia National Laboratories



# Assessment of Near-Surface Dissolution At and Near the Waste Isolation Pilot Plant (WIPP), Southeastern New Mexico

## Introduction

The Waste Isolation Pilot Plant (WIPP) is a facility being developed by the US Department of Energy (DOE) for burying radioactive waste in underground beds of salt in Eddy County, NM. Although the proposed facility is more than 2000 ft (615 m) below the surface, there is continuing concern for the stability of rock adjacent to the host beds.

Strata overlying the WIPP facility horizon include sandstone, clay, and evaporites such as gypsum, anhydrite, and salt. If these evaporites are being actively dissolved in the subsurface, collapse sinks and related karst features should become apparent at places on the surface. Although no karst features have been definitely recognized on the surface closer than ~3 mi (4.8 km) from the WIPP shaft, subsurface dissolution has been interpreted as present at and near the site from a recent gravity survey (Barrows and others, 1983).

The present study applying standard geologic techniques was undertaken to determine if active subsurface dissolution of evaporite beds is a plausible process in the modern geologic setting at the WIPP site. This study included examining available borehole data and surface features in the WIPP area. Other data, such as existing geologic maps, were examined and interpreted. Data from all these sources were used to construct the isopach maps and diagrams accompanying this report. These observations provided information for outlining the physiographic history of the modern terrain. Consideration of that history is essential to understanding the natural setting of the WIPP site.

## Physiography

The WIPP site, located ~25 mi (40.2 km) east of Carlsbad, Eddy County, NM (Figure 1), is situated on an unnamed physiographic surface that we call the Livingston Ridge surface for purposes of this discus-

sion. The surface is underlain by caliche and wind-blown sand. Mesquite, shinnery oak, creosote bush, and associated flora of the Chihuahuan Desert characterize this semiarid region. The major physiographic features that have been a part of the recent geologic history of the area include Nash Draw, the Livingston Ridge surface, and The Divide. The Pecos River, whose modern course lies ~20 mi (32 km) west of the WIPP site, has been a major influence in the physiographic history of the region.

Nash Draw is the most distinctive topographic feature at or near the WIPP site. A northeasterly trending depression ~19 mi (30.6 km) long, it ranges from ~5 mi (8 km) wide in its central portion to ~10 mi (16.1 km) wide in its northern portion. The greater width in the north results from erosional dissection that bifurcates the drainage system into a northwestern and a northeastern lobe. Nash Draw is bounded on the west by Quahada Ridge and on the east by Livingston Ridge. Along its north rim the Maroon Cliffs form a barrier between Nash Draw and Clayton Basin.

The Livingston Ridge surface stretches eastward from Nash Draw ~12 to 13 mi (19.3 to 20.9 km) to Antelope Ridge, which lies along the western edge of San Simon Swale (Figure 1). The surface is a rolling, featureless plain.

Windblown sand has accumulated over much of the Livingston Ridge surface and in parts of Nash Draw and San Simon Swale. Some active dunes are present in the Los Medaños area on the southern part of the Livingston Ridge surface. Active dunes are also present locally at other places, but most of the wind-blown sand is in the form of stabilized coppice dunes—accumulations of sand around mesquite and other plants. The active dunes take the form of incipient crescent-shaped barchans or elongate transverse dunes. Closed depressions called “blowouts” are common features within both stabilized and active dune areas.

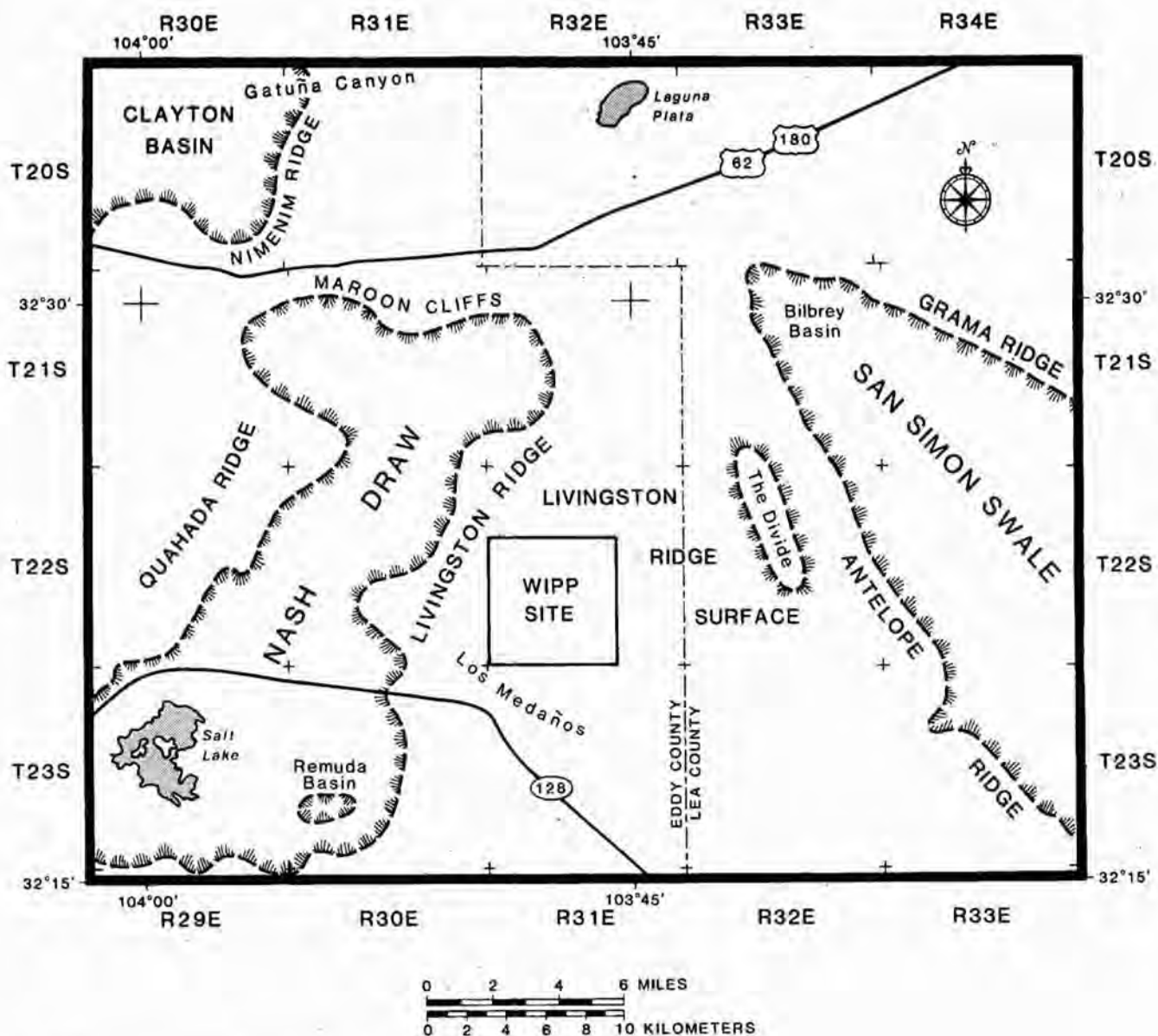


Figure 1. Index map showing major features discussed in this report

The Divide is the proper name for a low hill rising above the Livingston Ridge surface and separating surface drainage towards Nash Draw on the west and San Simon Swale on the east. Much of the drainage around The Divide is now masked by windblown sand; visible drainage is intermittent and discontinuous. The entire area of the Livingston Ridge surface and The Divide has been a stable area of low relief for at least the past 500,000 yr (Bachman, 1980). Previously, westerly trending ridges and intervening swales with through-flowing streams radiated from the general area of The Divide. Gradients were low, with streams of low to moderate energy.

## Geology

The geology of the WIPP site has been discussed extensively in the literature (Jones, 1973 and 1978; Bachman, 1980 and 1984; Lambert, 1983; Mercer, 1983; Borns and others, 1983). Only factors pertinent to a discussion of late geologic history and to the problem of dissolution will be treated here.



## Stratigraphy

The stratigraphy of the WIPP site has been discussed previously in detail (Jones, 1973 and 1978; Mercer, 1983; Lambert, 1983) and is presented only in outline here. Rocks in the stratigraphic column bearing on the present study are Permian, Triassic, Tertiary, and Quaternary in age. Permian rocks include four formations of the Ochoan series. In ascending order, these are the Castile, Salado, and Rustler Formations and the Dewey Lake Red Beds. They are overlain unconformably by clastic sediments of Triassic age. Surface and near-surface rocks include the Ogallala Formation and a variety of surficial deposits (Table 1).

Castile and Salado rocks are very soluble and are represented by dissolution breccia where they occur at the surface ~25 mi (40 km) southwest of the WIPP site. At the WIPP site both these units are deeply buried and apparently have not been exposed to dissolution. Of the stratigraphic units close to the surface at and near the WIPP site, anhydrite, gypsum, and salt in the Rustler Formation in the subsurface are the most susceptible to dissolution resulting in karst features at the surface.

In addition to these evaporites, the Rustler includes the water-bearing Culebra and Magenta Dolomite Members. The water in these members is usually confined to the individual members where these are within an impermeable sequence of anhydrite or gypsum. Where the Rustler is exposed in Nash Draw, the dolomite members are fractured and the gypsum beds are disrupted by many collapse sinks and caves as a result of local dissolution. At places in the subsurface underlying the Livingston Ridge surface, boreholes have encountered cavernous intervals and clayey residuum at horizons where salt and gypsum are present normally in more complete stratigraphic sections.

The quality of the water in the dolomite members has been discussed in detail by Mercer (1983). Qualities vary widely over the region and are classified as saline to briny. "Dissolved solids in waters associated with the Culebra Dolomite Member range in concen-

tration from 3,200 milligrams per liter... to 420,000 milligrams per liter" in test holes at and near the WIPP site (Mercer, 1983, p 62). "Dissolved solids in water associated with the Magenta Dolomite Member... range in concentration from 5,460 milligrams per liter... to 270,000 milligrams per liter" (Mercer, 1983, p 68). Both waters are capable of dissolving more solids. Saturated brine occurs in a clayey brecciated unit at the basal contact of the Rustler with the Salado Formation in the subsurface in Nash Draw.

The Rustler Formation varies in thickness from 263 ft (80.2 m) in the subsurface in Nash Draw (Borehole WIPP-27) to 460 ft (140.2 m) near the southeastern edge of the site (Borehole P-18). The thinning of the formation in Nash Draw is attributable to dissolution of evaporite beds in the formation. Thinning of the formation beneath the Livingston Ridge surface is attributed both to dissolution of salt within the formation and to variations of thickness during original deposition (Jones, 1973, p 23; Mercer, 1983, p 45). Figure 2 shows some of the variations.

The regional dip of rocks at the WIPP site is easterly ~75 to 100 ft/mi (14 to 18 m/km). Owing to this regional dip, rock units are more deeply buried from west to east. Thus the Rustler Formation is exposed at the surface in Nash Draw. At Livingston Ridge along the eastern edge of Nash Draw, the Rustler is buried beneath Dewey Lake Red Beds to a depth of 200 to 300 ft (61 to 91 m). At the WIPP site the Rustler is beneath 300 to 400 ft (91 to 122 m) of Dewey Lake Red Beds. At and near The Divide the Rustler is covered by >500 ft (152 m) of Dewey Lake Red Beds and 200 to 300 ft (61 to 91 m) of Triassic rocks.

Rocks of both the Dewey Lake Red Beds and Triassic are composed of insoluble clastic rocks. Karst features cannot be expected to develop in these units unless there has been extensive dissolution in underlying formations. Although veinlets and pods of selenite at many places in the Dewey Lake Red Beds indicate circulation of sulfate-bearing waters in this unit in the past, the Dewey Lake at present "has not normally been found to yield water to wells" (Mercer, 1983, p 70).

**Table 1. Summary of Stratigraphic Units Discussed in This Report At and Near the WIPP Site**

System	Series	Formation	Thickness (ft)	Characteristics
Quaternary	Recent	Windblown sand	0 to 30	Sand dunes
		Alluvium	0 to 20	Arroyo deposits
		Playa deposits	0 to 50	Silt and clay in closed basins
	Pleistocene	Spring deposits	0 to 30	Gypsite spring mounds and runoff deposits
		Berino soil	0 to 4	Dark reddish, clayey, non-calcareous paleosol
		Mescalero caliche	0 to 10	White ledge-forming caliche
		Gatuña Formation	0 to 70+	Dark reddish-brown to yellowish-brown gravel, sand, silt
----- ? ----- ? ----- ? ----- ? -----				
Tertiary	Miocene-Pliocene	Ogallala Formation	0 to 26+	Gray to yellowish-gray sand and gravel, capped by distinctive pisolitic caliche. Preserved at The Divide and Grama Ridge
Triassic		Dockum group, undivided	0 to 300+	Reddish-brown to gray, coarse sandstone and conglomerate
Permian	Ochoan	Dewey Lake Red Beds	150 to 550	Reddish-brown fine-grained sandstone. Many greenish-gray reduction spots
		Rustler Formation	300 to 450+	Gypsum, anhydrite, salt, and dolomite. (Includes the Culebra Dolomite Member near the middle and the Magenta Dolomite Member in the upper part.)
		Salado Formation	1800 to 2000	Salt, potash minerals, and minor beds of gypsum and clay. Beds in this formation are being examined as potential host rocks for emplacing radioactive waste
		Castile Formation	± 2000	Anhydrite and gypsum with interbeds of salt

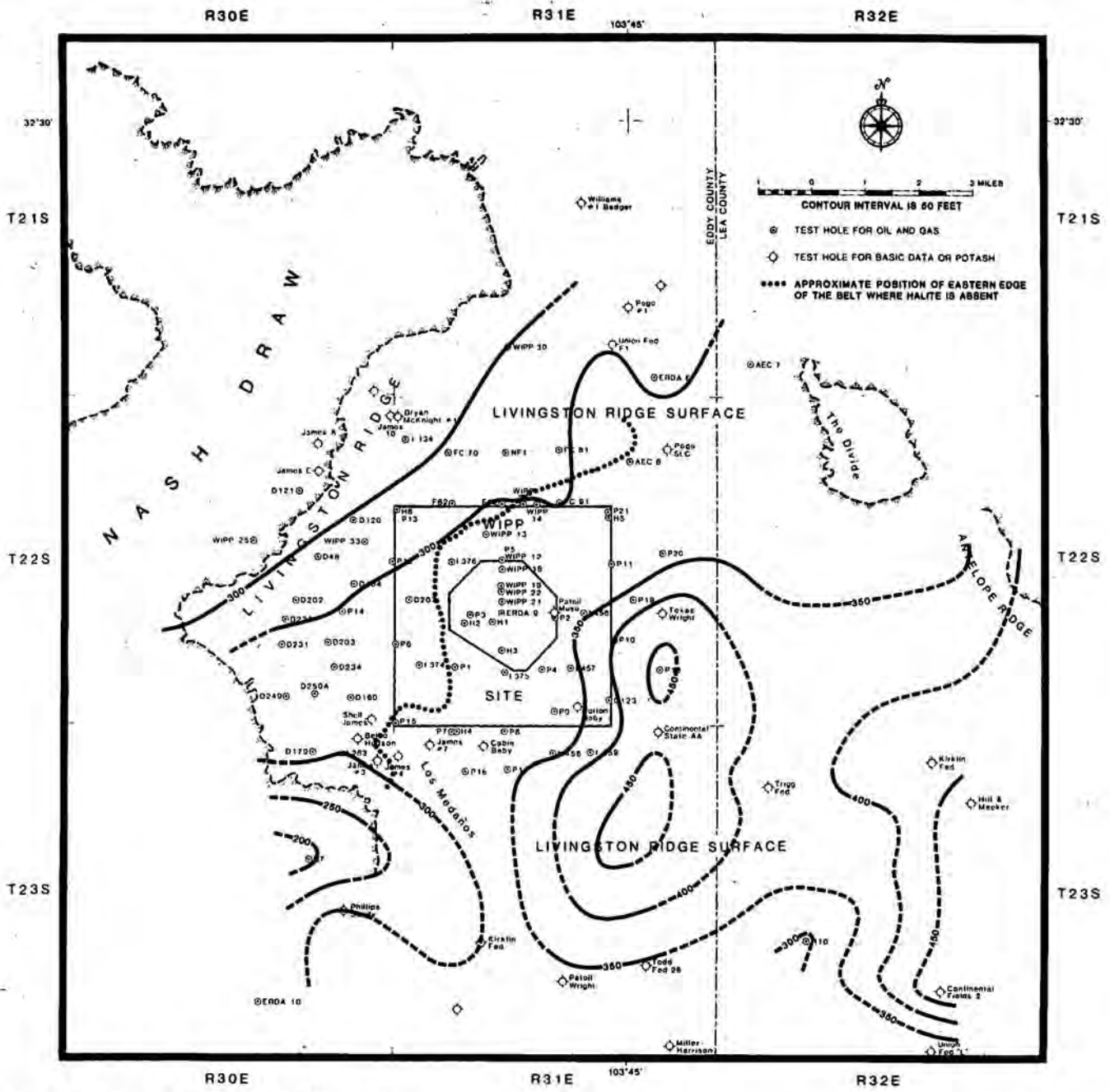


Figure 2. Isopach map of Rustler Formation

Information Only

## Tertiary Deposits

### Introduction

Although there are many gaps in the stratigraphic record, rocks of Tertiary and Quaternary age preserve the latest geologic history of southeastern New Mexico. A particularly long gap occurs in the record through early Tertiary time, and the physiography of the region at that time can only be conjectured. The region was above sea level; presumably erosion was the dominant process.

### Ogallala Formation

The Ogallala Formation of Miocene and Pliocene age underlying the High Plains from Nebraska southward to western Texas and eastern New Mexico reflects a period of uplift and erosion of the Rocky Mountains. This formation was deposited mostly as a complex sequence of alluvial fans on an irregular erosion surface by streams flowing toward the south and east from the young mountains. In southeastern New Mexico extensive deposits of windblown sand characterize the interstream deposits of the Ogallala. Although the Ogallala Formation is now a remnant of a major depositional cycle in the past, it represents the first stage in developing the modern landscape.

At the termination of Ogallala deposition the region was unusually stable. A thick pedogenic caliche that accumulated on the surface is preserved as the well-known caliche "caprock" of the High Plains. The caprock is a complex deposit formed during at least 3 million years of desiccation, brecciation, and recementation.

The Ogallala Formation is as much as 400 ft (122 m) thick at places in southeastern New Mexico. A thin remnant 26 ft (8 m) thick is preserved at The Divide ~6 mi (9.6 km) east of the WIPP site. This remnant is significant to the interpretation of the physiographic history of the region. It may represent a western depositional wedge-edge of the Ogallala across a relatively high surface. Examination of the isopach maps accompanying this report suggests that the general area of The Divide was a positive topographic feature as long ago as Ogallala time.

Regional drainage during Ogallala time was towards the south and the southeast, but details of the drainage system at or near the WIPP site are not clear because extensive deposits of the formation are not available for analysis. It is probable that an ancestral Pecos River flowed southward in New Mexico along a course within 3 to 10 mi (5 to 16 km) east of its present channel. Thick deposits of alluvial fill to the south in Texas may be, in part, the result of this drainage and

depositional episode. These alluvial deposits are >1500 ft (460 m) thick (Maley and Huffington, 1953). They were deposited in basins formed by subsidence, or collapse, as a result of dissolution of salt from formations in the subsurface. The older parts of these deposits are present only in the subsurface, and their presence is known only from exploratory boreholes for oil and gas. Evidence is not available to determine the age of these deposits.

Major changes in drainage occurred later in Pleistocene time when some secondary drainages flowing westward from the High Plains were developed. These drainage systems flowed into the ancestral Pecos River (Bachman, 1984).

## Pleistocene Deposits

### Gatuña Formation

The Gatuña Formation is at least as old as Middle Pleistocene and may contain some much older deposits. Characteristically it consists of reddish-brown, poorly consolidated sand, gravel, and silty clay. Deposits that are assigned to the Gatuña Formation are distributed along the east side of the Pecos River in Nash Draw, Clayton Basin, and east of Artesia and Hagerman, NM ~30 to 50 mi (48 to 80 km) north of Carlsbad (Bachman, 1976). In Pierce Canyon ~20 mi (32 km) southeast of Carlsbad it includes stream gravels that have collapsed into ancient sinks.

In the vicinity of the WIPP site, the Gatuña rests unconformably on the Dewey Lake Red Beds. It is overlain by the pedogenic Mescalero caliche, which accumulated on stable surfaces following Gatuña deposition. The presence of the Mescalero caliche overlying the formation separates the Gatuña from other deposits and aids in distinguishing the formation.

The age of the Gatuña Formation is based on the presence of a thin bed of volcanic ash within the formation on the east side of Nash Draw. The ash has been identified as a member of the Pearlette family of ash falls, the "Lava Creek B ash" (Izett and Wilcox, 1982). It was derived from the Yellowstone area, WY between 500,000 and 600,000 yr ago. The Mescalero caliche overlying the Gatuña confirms this age. It began to form ~500,000 yr ago (Bachman, 1980).

Near Artesia and Hagerman and in Gatuña Canyon to the north of the WIPP site, gravels in the Gatuña Formation indicate that they were deposited by westward-flowing streams. Carbonate pebbles in the gravels contain unique spherical or ovoidal accretionary masses (pisoliths) derived from the High



Plains caprock to the east. These distinctive accretionary masses are characteristic of the High Plains caprock and cannot be confused with other rocks in the region. Additional evidence for westward-flowing streams during Gatuña time is provided by distinctive quartzite pebbles derived from Triassic beds exposed to the east of the present Pecos River. It is assumed that these westward-flowing streams emptied into the ancestral Pecos River.

During the present study, the Gatuña Formation was examined and measured at many places along Livingston Ridge on the east side of Nash Draw. Gravels deposited by westward-flowing streams are exposed at several localities. These include cross-bedded, poorly sorted deposits in channels, which indicates deposition by water flowing at moderate

velocity (Figure 3). The measured thicknesses of the Gatuña along Livingston Ridge, and borehole data, were used to construct the isopach map accompanying this report (Figure 4).

The isopach map of the Gatuña Formation indicates the presence of an east-west channel north of the WIPP site during Gatuña time. Sediments >70 ft (21 m) thick were deposited there. An east-west ridge was present across the northern part of the site, and an area of low relief received sediments across the central and southern parts of the site. Comparison of the Gatuña isopach map with the isopach map of Triassic rocks (Figure 5) indicates that the Gatuña channel and the lowland south of the site drained and eroded the Triassic rocks exposed at the surface. Gatuña streams flowed across both Triassic and Dewey Lake Red Beds strata (Figure 6).



**Figure 3.** Cross-bedded pebble conglomerate in channel deposit at base of Gatuña Formation (SW  $\frac{1}{4}$  NW  $\frac{1}{4}$  Sec. 1, T22S, R30E). (The Gatuña rests on Dewey Lake Red Beds at this locality.)



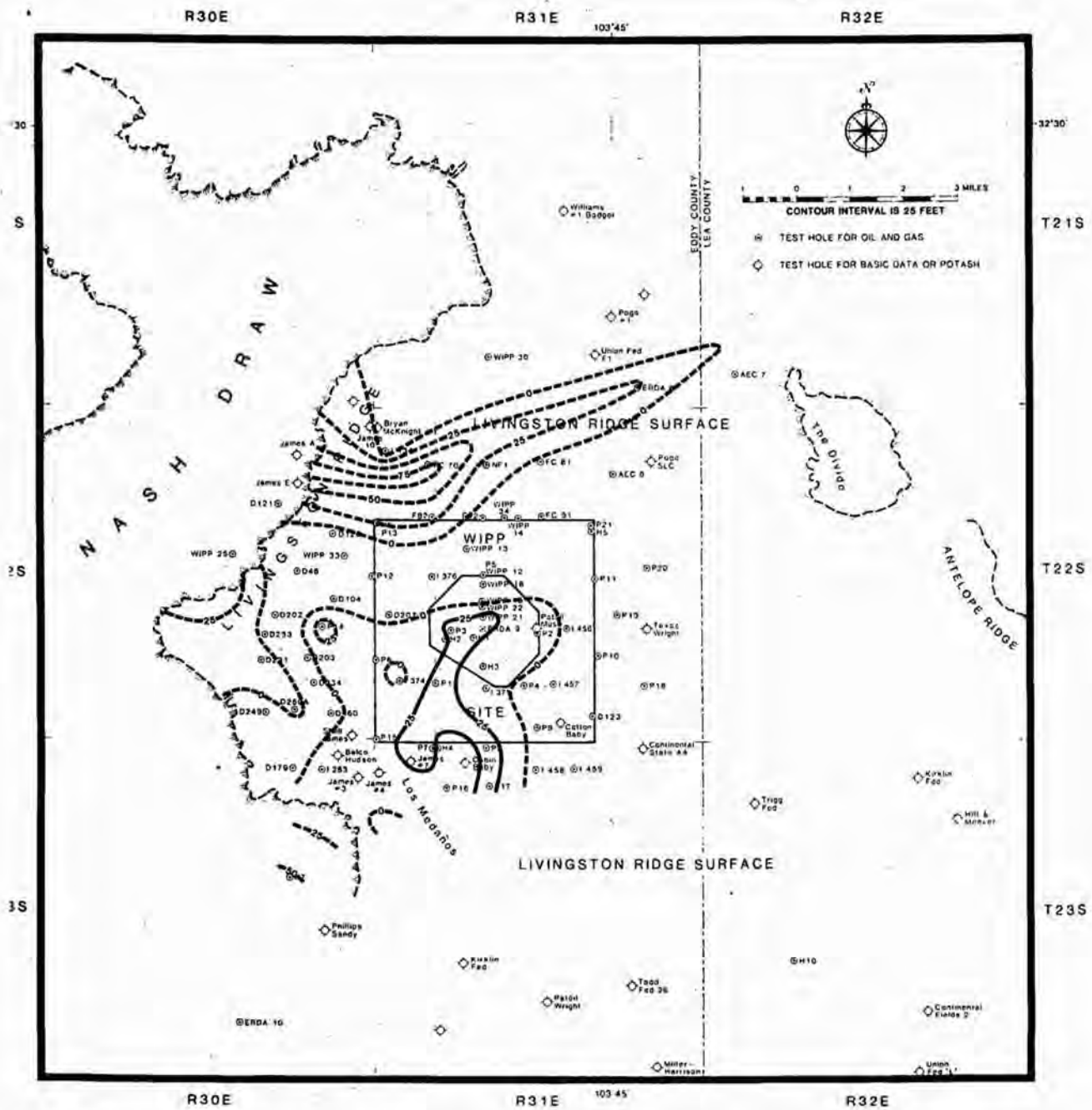


Figure 4. Isopach map of Gatuña Formation

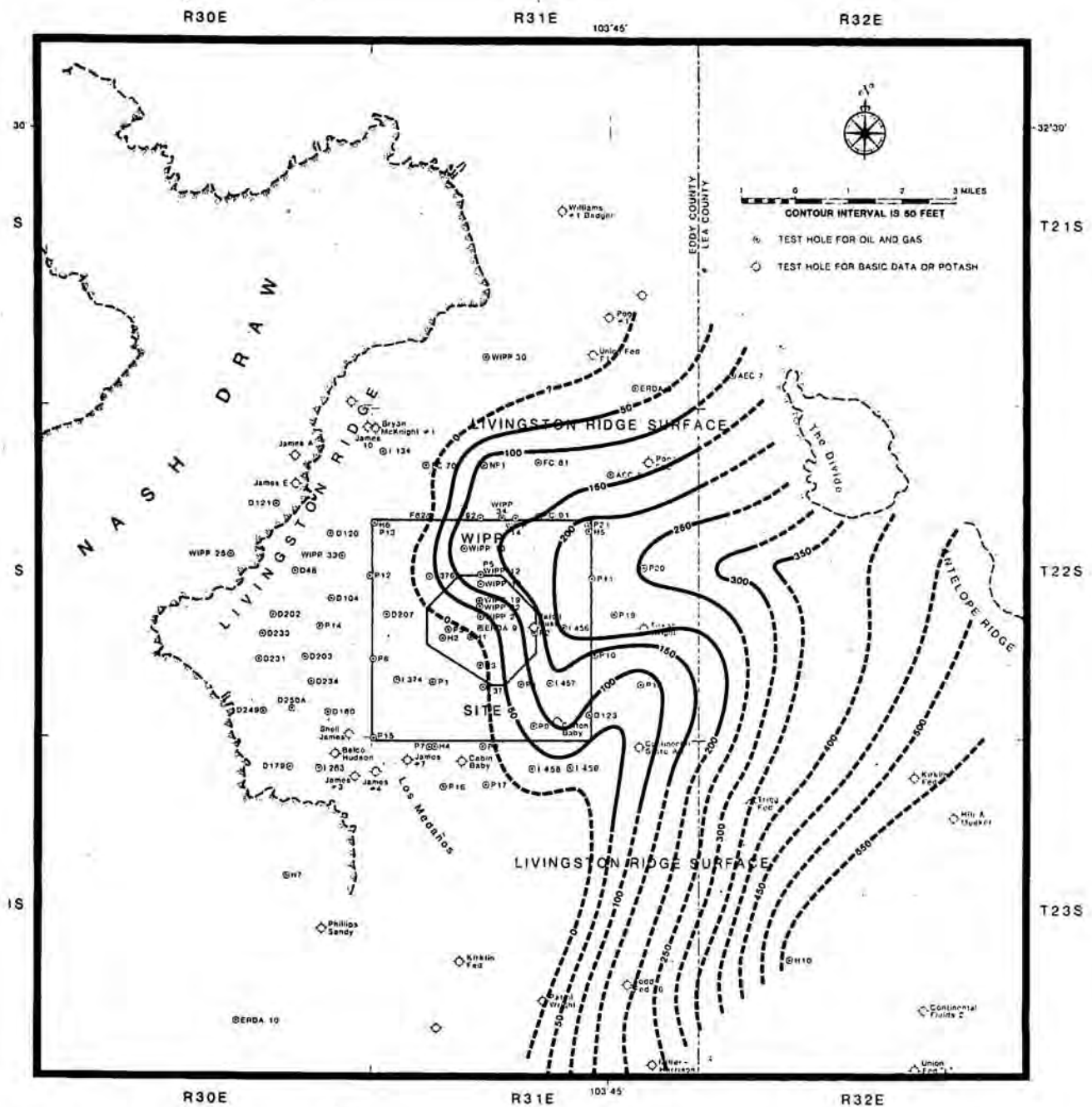


Figure 5. Isopach map of Triassic rocks

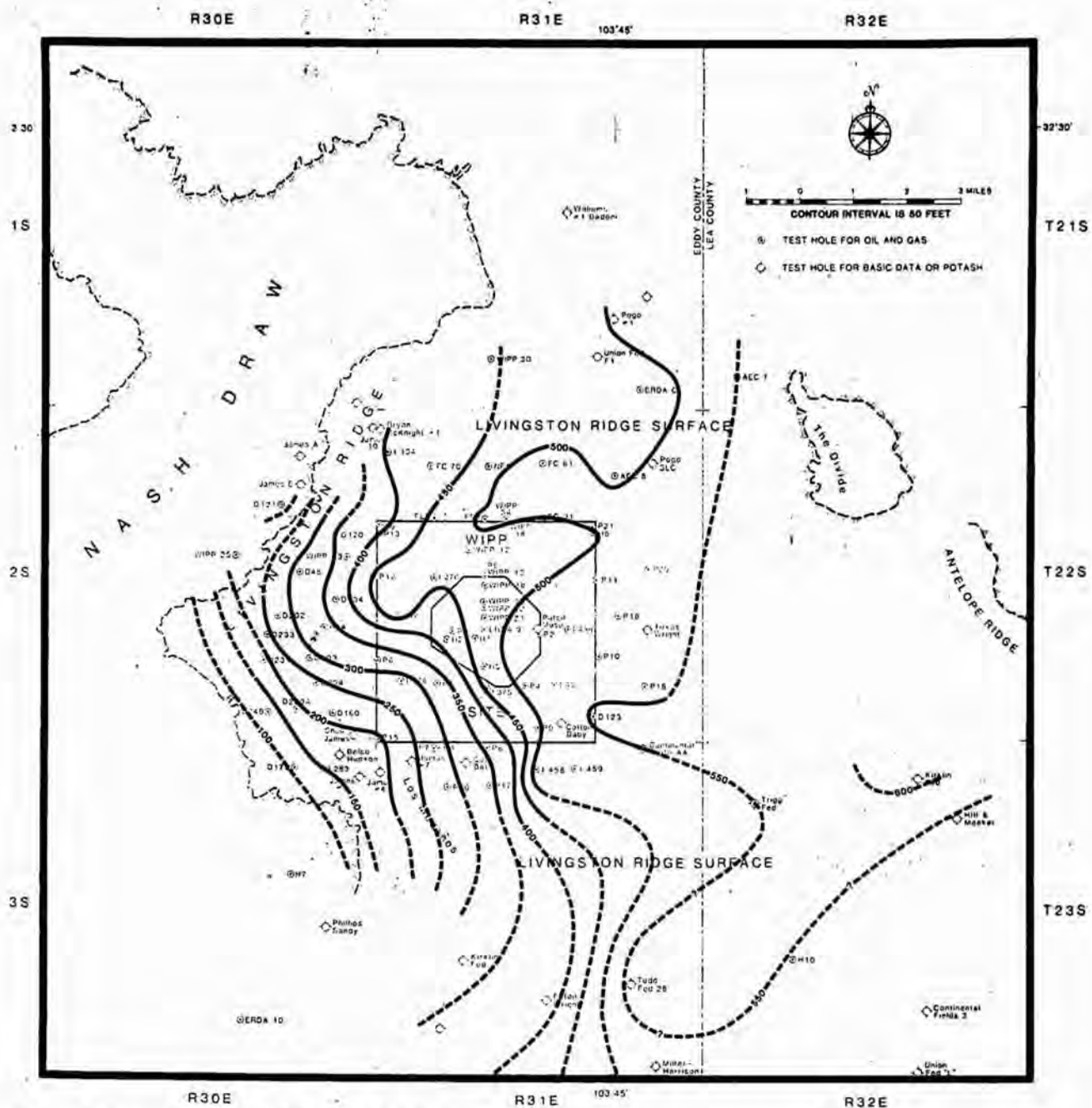


Figure 6. Isopach map of Dewey Lake Red Beds

Information Only

## Mescalero Caliche

The term "caliche" has been applied to many kinds of carbonate and sulfate deposits. As used in this report, "caliche" refers to a deposit of calcium carbonate (a calcrete) displaying a distinctive, predictable morphology. The morphology indicates formation of the caliche by soil processes. By examining caliche profiles through their evolutionary development over broad regions, we find it possible to determine their evolutionary stage and even to estimate their age in relative terms (Bachman and Machette, 1977).

Soil formation is a relatively slow process requiring a stable surface for development. Soils do not mature on constantly eroding surfaces or surfaces disrupted by subsidence, collapse, or persistent tectonic adjustment. Extensive soil development should not be expected at places where specific karst processes are extremely active. Soil classes depend on the nature of parent material, the amount of rainfall, the temperature, and the absence or presence of organic material. Soils may change character or may even be destroyed by radical changes in climate. For these reasons soils are a valuable tool for estimating the duration of stability of a geomorphic surface and the persistence of a climatic regime.

Pedogenic caliche, such as the Mescalero caliche, is deposited on an aggrading eolian surface. The calcium carbonate comprising the caliche profile is derived from wind-borne sand and dust as well as from rainwater. Dust in the Southwest often contains as much as 1.3% to 5.7% calcium carbonate (Gile and others, 1981, p 63). Rainwater may contain  $>4$  mg of calcium carbonate/L (Junge and Werby, 1958). The calcium carbonate is leached from the wind-borne sediments in minute seasonal increments, is carried downward by percolating soil moisture, and is then deposited in a zone of evaporation in underlying soil horizons. The zone of evaporation represents the average depth of penetration of infiltration of soil moisture over the period of deposition.

In southern New Mexico, four stages of evolutionary development of pedogenic caliche are recognized (Gile and others, 1966). Over broader regions this evolution has been further refined into six stages (Bachman and Machette, 1977). These six morphologic stages are related to the relative age of the deposit, according to the availability of a continuing supply of calcium carbonate. The stages are visible to the naked eye and are defined in general terms as follows:

<u>Stage</u>	<u>Definition</u>
I (Youngest)	Carbonate is in form of filamentous or faint coatings on detrital grains. Coatings may be restricted to the underside of individual grains.
II	Carbonate forms a continuous coating on sand grains or pebbles.
III	In addition to coating detrital grains, carbonate occurs as nodules as well as forming a friable or disseminated matrix. The horizon is plugged to the downward movement of solutions.
IV	Carbonate is platy and firmly cements the matrix. The horizon is plugged to downward-moving solutions.
V	Carbonate is platy to tabular and very strongly cemented. A well-developed laminar layer occurs on the upper surface. The laminar layer forms because calcium carbonate-bearing water can no longer penetrate the horizon.
VI (Oldest)	The carbonate is massive, multilaminar, and strongly cemented. Includes abundant pisoliths. The upper surface may be brecciated. The Ogallala "caprock" is an example of this stage.

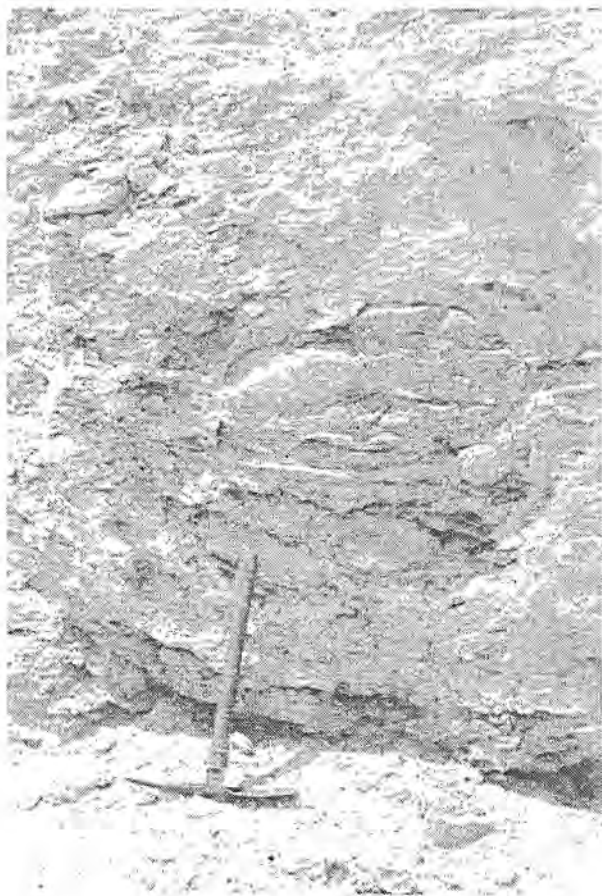
The Mescalero caliche was an ancient soil horizon now outcropping as ledges of light gray to white, platy to tabular, dense, sandy calcium carbonate as much as 10 ft (3 m) thick. It was named for the Mescalero geomorphic surface and the Mescalero sands east of Roswell, NM (Bachman, 1976) ~75 mi (120 km) north of the WIPP site. It rests on the Mescalero surface, which encompasses the Livingston Ridge surface of this report, from its type area east of the Pecos River southward at least to the New Mexico-Texas State line, a distance of ~100 mi (160 km).

The Mescalero caliche is an example of Stage V in the above classification. It engulfs the bedrock on which it rests (Figure 7) and forms a barrier to the infiltration of precipitation. Where the laminar horizon and the dense plugged horizons within the caliche are at the surface, they contribute to rapid runoff and even to flooding during periods of heavy rainfall. Hazardous flooding conditions have been observed in populated areas such as Las Vegas, NV (Lattman, 1973) where similar caliches are at, or near, the surface.



The basal part of the Mescalero caliche began to form ~510,000 yr ago, as determined by measuring the disequilibrium of the uranium series. The upper crust of the caliche began to form ~410,000 yr ago (Rosholt, written communication, 1979). The technique used in these determinations has been described by Szabo (1969) and Rosholt (1980).

In southern New Mexico, caliche morphologically similar to the Mescalero has been studied extensively. Both the organic and inorganic carbon fractions of the upper laminar layers there indicate C-14 dates ranging from 21,000 to 32,000 yr (Gile and others, 1981, p 122). This indicates only that the carbonate in this horizon is extremely mobile, and that the laminar horizon formed rapidly. It also suggests the large influence of a small proportion of recently precipitated carbonate on the C-14 age (Gile and others, 1981, pp 76-77).



**Figure 7.** Mescalero caliche engulfing Triassic rocks (SE ¼ SE ¼ Sec. 23, T22S, R31E). (Mescalero-Triassic contact is the sharp boundary just above the head of the trenching tool. The handle of the trenching tool points upward to a rounded "boulder" of Triassic sandstone surrounded by caliche.)

## Berino Soil

The Berino soil is a dark-red, sandy, clayey, non-calcareous paleosol overlying the Mescalero caliche near the WIPP site. Rarely more than 3 ft (1 m) thick, it is usually overlain by windblown sand and is observed mainly in road cuts and at construction sites.

In southeastern New Mexico, deposits such as the Mescalero caliche and the overlying windblown sand that are adjacent to the Berino soil are very calcareous. That the Berino is noncalcareous indicates leaching of the carbonates from this unit. The Berino is probably a remnant of an ancient soil sequence, the argillic B horizon, which included the Mescalero caliche at its base as the C or K soil horizon.

Uranium-series disequilibrium studies indicate that the Berino began to form ~350,000 yr ago (Rosholt, written communication, 1979). This age does not coincide with the youngest age of the Mescalero, which is one reason for considering the Berino as a remnant of a former more extensive sequence of soils. Further, it is also inconceivable that the leaching of a B horizon as thin as the Berino as now preserved could have yielded the amount of carbonate required to form the underlying Mescalero. Like the Mescalero caliche, formation of the Berino soil depended on a relatively long period of tectonic and geomorphic stability within a limited climatic regime.

## Spring Deposits

Soft, earthy, white deposits of calcium sulfate (gypsite) resulting from ancient spring activity in a zone roughly parallel to Livingston Ridge occur along the east side of Nash Draw. At least six low spring mounds are situated along the crest of a low anticline in Dewey Lake Red Beds (NE ¼ Sec. 15, T22S, R30E) where tension fractures allowed seepage of sulfate-bearing water to the surface.

Although the regional dip of the bedrock is toward the east, dissolution of underlying evaporites in the Rustler Formation in Nash Draw has resulted in local collapse and flexures toward the west. This dissolution and collapse of strata is presumed as the cause of the local anticline in the Dewey Lake Red Beds. The mounds developed as spring water evaporated. Wind-borne dust settling to the moist ground added to the accumulation. At times the spring-fed water flowed westward over the surface as far as 1/2 mi (0.8 km) downslope towards the center of Nash Draw.

Snails and bones of extinct species of horses and camels have been found in these spring deposits. The bones indicate active springs during Late Pleistocene time, after deposition of the Mescalero caliche (Bachman, 1980). Although long extinct, these springs indicate that in the past gypsum and associated salts



dissolved locally in the subsurface and were then brought to the surface by circulating groundwater.

There is a major hiatus between the spring deposits (>25,000 yr; J. N. Rosholt, written communication, 1979) and the Berino soil; this part of later Pleistocene time is apparently not represented in the sediments of southeastern New Mexico.

## Playa Deposits

Playa deposits consisting of silt, clay, and saline evaporites are preserved in the larger closed basins and in Salt Lake (Laguna Grande de la Sal) at the south end of Nash Draw. They are particularly well developed in Clayton Basin, where fossil snails are preserved in the deposits. However, playa deposits are not well represented in Nash Draw, where they would be if Nash Draw were a stable depression. Presumably Nash Draw was disrupted by much subsidence and the formation of collapse sinks. Water drains readily into these sinks without collecting on the surface as intermittent ponds, necessary for accumulating playa deposits.

At places within dune fields on the Livingston Ridge surface and elsewhere, incipient playas develop intermittently within blowouts. These are characterized by mud-cracked silt at the surface. Within some blowouts silty carbonates were deposited in thin, soft, light-gray lenticular beds.

## Alluvium

Silt, sand, and gravel, which are deposited in depressions by running water, are especially thick (at least 20 ft (6 m)) in the northern part of Nash Draw. These deposits are presently eroding in conjunction with the formation of collapse sinks downstream in Nash Draw. The sinks increase the gradient of the arroyo systems, which in turn contributes to erosion and dissection.

Much alluvium is eroded from the surface and carried into karst sinks and tunnels by means of solution and fill (Lee, 1925). By this process solution cavities are rapidly filled and even "healed" by surficial debris. At some places deposits formed by this process are preserved as a chaotic mass of silt, sand, gravel, and blocks of gypsum.

## Windblown Sand

Windblown sand is widespread at and near the WIPP site. Except for a small area of transverse dunes in the Los Medaños dune field south of the WIPP site,

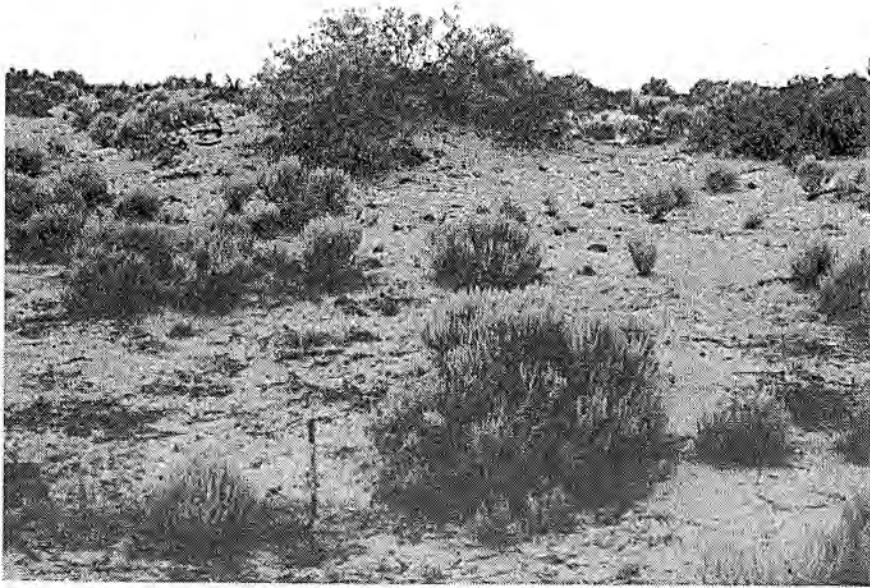
most dunes at and near the site are nondescript stabilized features, or at best may be classified as barchans or coppice dunes. Barchan dunes are crescent-shaped and have been observed only in areas of recent blowouts and active dune movement. They are most common in the Los Medaños field and in Bilbrey Basin east of the WIPP site. Coppice dunes are stabilized mounds of sand accumulating around shrubs such as mesquite or shinnery oak (Figure 8).

Blowouts (closed depressions within a dune field) are common in all types of dune fields in southeastern New Mexico and in the sand seas of the world. They develop where there is a lowering of the crest of a dune. "The local increase of wind velocity through the gap causes a rise in the rate of sand movement there, with a consequent removal of sand from the surface of the gap. The gap gets bigger and a blowout is formed" (Bagnold, 1973, p 206).

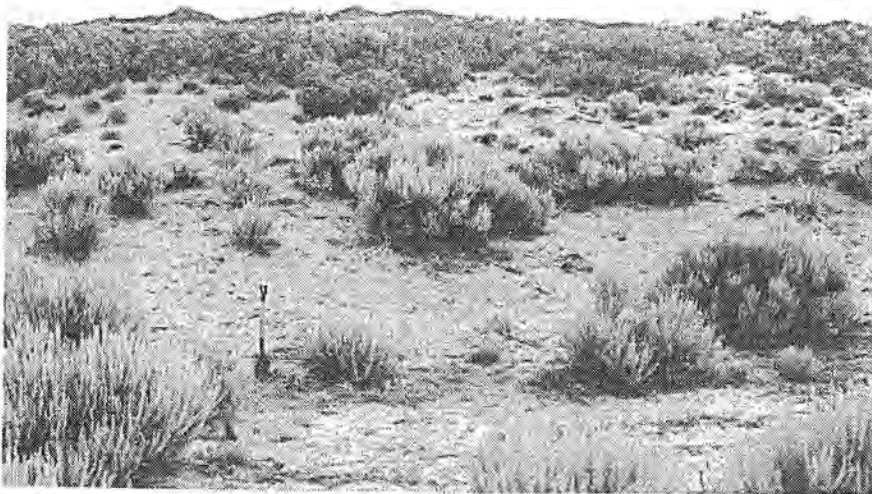
A blowout ~1.4 mi (2.3 km) southwest of the WIPP shaft was examined in some detail to determine if this particular feature was related to karst processes. It is located in the SW $\frac{1}{4}$  SW $\frac{1}{4}$  Sec. 29, T22S, R31E and is ~100 m west of Borehole P-1. The blowout, an elongate depression trending N60°E, is ~200 ft (61 m) long and ~80 ft (24 m) wide. It is 6 ft (1.8 m) deep (Figure 9). Mud cracks form a weak pan in the bottom of the blowout (Figure 10). Coppice dunes rising above the depression on the leeward side probably formed as a result of wind action within the blowout (Figure 9). An auger hole in the bottom of the blowout reached the Mescalero caliche 0.8 m below the surface. A remnant of Berino soil is preserved in one side of the blowout.

There is no evidence of collapse of the Mescalero caliche or of other surficial deposits at this place because of karst processes. The stratigraphic section in Borehole P-1 is similar to that of the sections in other nearby boreholes. The halite in the upper part of the Rustler Formation dissolved at some time in the past but is present in the lower part of the Rustler. The Salado Formation appears to be intact.

Where blowouts are contained within a field of stabilized dunes, they may exist for a relatively long time in terms of the history of the dune field. On the Livingston Ridge surface the impermeable Mescalero caliche beneath the dunes holds water within blowouts during rainy seasons. The finest grained sediments are sorted by water and deposited on the surface of the depression. Upon drying, mud cracks form on the surface of these depressions and leave the impression of an ephemeral pool (Figure 10).



**Figure 8.** Coppice dune on skyline, on rim of blowout (SW $\frac{1}{4}$  SW $\frac{1}{4}$  Sec. 29, T22S, R31E)



**Figure 9.** Blowout in dune sand (SW $\frac{1}{4}$  SW $\frac{1}{4}$  Sec. 29, T22S, R31E). (Coppice dunes are visible on the skyline.)



**Figure 10.** Mud-cracked pan in bottom of blowout (SW  $\frac{1}{4}$  SW  $\frac{1}{4}$  Sec. 29, T22S, R31E). (Water occasionally stands in blowouts after rain.)

## Karst and Near-Surface Dissolution

The vast terminology of karst features and karst phenomena has been treated in compilations and glossaries in several languages. The most comprehensive of these in English is by Monroe (1970). His terminology emphasizes dissolution features in limestone (calcium carbonate) terrain. The process of dissolution in evaporites such as gypsum, halite, and related salts is dominantly the physical processes of dissolution and corrasion, in contrast to the chemical processes in limestone where  $\text{CO}_2$  in the atmosphere combines with water to form acids dissolving the carbonate. However, the terminology of karst in limestone generally applies to that in evaporites. Monroe's terminology is used here with minor modifications.

The term "karst" is applied here to a kind of topographic development in which the topography is formed chiefly by the dissolution of underlying rock. Such topography is commonly characterized by closed depressions, subterranean drainage, and caves. The closed depressions may be defined more specifically as dolines or collapse sinks. Dolines are basins or funnel-shaped hollows "ranging in diameter from a few meters to a kilometer and in depth from a few to

several hundred meters. . . . A distinction may be made between those formed by a direct solution of the . . . surface zone, solution dolines, and those formed by collapse over a cave, collapse dolines" (Monroe, 1970, p 7). The latter may also be termed "collapse sinks." The term "paleokarst" pertains to "a karstified rock or area that has been buried by later sediments" (Monroe, 1970, p 13).

Karst phenomena are common, and karst terrains and paleokarsts are common in southeastern New Mexico where Permian carbonates and evaporites are at, or near, the surface. Carlsbad Caverns and other caves in the Permian carbonate reef of the Guadalupe Mountains are the most widely known of these features. Less well-known is the terrain where evaporites have been dissolved to form complex karst landscape. Since dissolution of salt and gypsum is a recognized potential hazard to the WIPP site, a better understanding of the limits of this dissolution is paramount to understanding the geologic setting of the site.

Karst terminology should be defined with precision. Careless treatment of concepts of karst phenomena, and even carelessly using karst terminology, can



contribute to misunderstanding and false impressions. The interpretation of karst activity in the vicinity of the WIPP site depends in part on understanding the distribution and physical nature of the stratigraphic units in the area. Although deep-seated dissolution has been active at localities around the periphery of the Delaware Basin in units associated with the Capitan Limestone and in the Pecos River drainage system overlying the Castile Formation (Lambert, 1983; Bachman, 1980 and 1984), deep-seated dissolution within the Delaware Basin is less probable because of physical limitations on the circulation of fresh water at depth. In contrast, dissolution of near-surface evaporites is responsible for the visible karst features in Nash Draw and at other places at and near the WIPP site. The caves, collapse sinks, and spring deposits in Nash Draw indicate a relatively long geologic history of dissolution of gypsum and associated evaporites.

Stream gravels in the Gatuña Formation on both the east and west sides of Nash Draw indicate flowing streams across the area now encompassed by Nash Draw before it became a topographic depression (Figure 11). The Gatuña stream system eroded into the evaporites of the Rustler Formation, and collapse sinks began to form near the end of Gatuña time before the formation of the Mescalero caliche was well underway (Bachman, 1980). As a result of following the strike of the Rustler Formation for a time, Gatuña drainage contributed to coalescing these sinks. Thus, part of Nash Draw is a paleokarst feature. Paleokarst is prominent in Pierce Canyon ~20 mi (33 km) south of the WIPP site.

In early studies of the WIPP site, dissolution of halite beds in the Rustler Formation was recognized over extensive areas beneath the Livingston Ridge surface (Jones, 1973). Halite beds are absent because of dissolution in the Rustler Formation in Nash Draw and along Livingston Ridge to the west of the site. They are absent in the Rustler above the Culebra Dolomite Member across the WIPP site itself (Mercer, 1983, p 45, Figure 13). At many drillholes where the halite beds should be present, they are represented by intervals of reddish, clayey, insoluble residues. Dissolution of halite in the Rustler appears to be related to permeability changes in the Culebra (Mercer, 1983, p 60). Increased permeability in the Culebra allows unsaturated groundwater to access, and dissolve, the halite.

Dissolution of halite, hydration of anhydrite to gypsum, and dissolution of gypsum result in local changes in thickness, in fracturing, and in forming karst features in the Rustler Formation. Field evi-

dence (Nash Draw as a topographic feature and ancient spring deposits) indicates such active processes for at least the latter half of Pleistocene time—~500,000 years.

Boreholes WIPP-33 and WIPP-14 were drilled on the Livingston Ridge surface specifically to address the problem of near-surface dissolution at and near the site (SAND80-2011; SAND82-1783). Information from these and other boreholes indicates that near-surface dissolution is most likely in proximity to Nash Draw, where evaporates in the Rustler are relatively near the surface. The dissolution of halite beds in the Rustler indicates further that the dissolution front within the Rustler is directly related to proximity to Nash Draw. Eastward from Nash Draw the front moves stratigraphically higher in the formation (Mercer, 1983, Figure 13). The easterly regional dip that plunges the Rustler deeper into the subsurface at and near the WIPP site is one factor that decreases the probability of near-surface dissolution at the site. The Dewey Lake Red Beds, which are composed of sandstone and silt, overlie the Rustler Formation at the site. These rocks do not dissolve readily, and water does not move through them freely. Karst features develop in these beds only if evaporites in the underlying Rustler are dissolved and the Dewey Lake collapses into the void.

WIPP-33 was drilled nearly 3 mi west of the center of the WIPP site (SE $\frac{1}{4}$  Sec. 13, T22S, R30E) because of the presence at that locality of a small closed basin with unique characteristics. Preliminary tests by hand auger indicated more than 20 ft (6 m) of alluvial fill within the basin. In addition, the Mescalero caliche is disrupted along the rim of the basin. The Gatuña Formation is absent at that place. An arroyo ~1 mi (1.6 km) long emptying into, and disappearing in, the basin is reminiscent of the conditions in the blind valley—a valley that ends suddenly where its stream disappears underground.

In the subsurface at WIPP-33 the Dewey Lake Red Beds are 357 ft (110 m) thick. This is an incomplete stratigraphic section that was eroded before the Mescalero caliche was deposited. The Rustler Formation, which is 276 ft (84 m) thick, is a diminutive section as compared with more complete sections where the Rustler may be as much as 450 ft (137 m) thick. This thinning of the Rustler at WIPP-33 may be attributed to dissolution of salt and gypsum; anhydrite has been hydrated to gypsum at this locality. Returns from drilling and a later video examination of the borehole indicated extensive cavities within the formation, straddling the gypsiferous Magenta dolomite member.

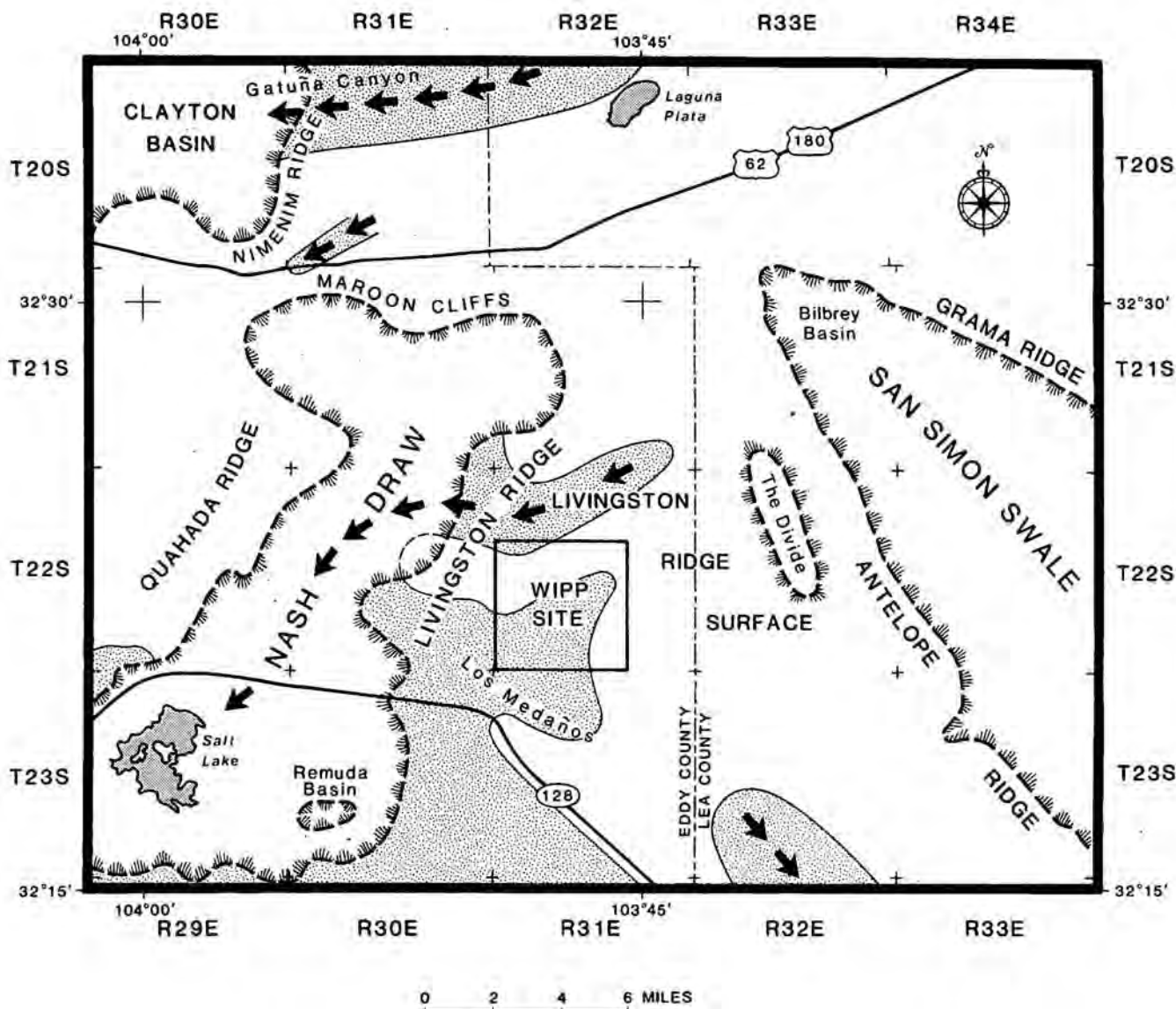


Figure 11. Map showing distribution of Gatuña Formation (stippled) and probable course of streams during Gatuña time (arrows)

Borehole data from other localities at and near WIPP-33 indicate that salt and some gypsum have been dissolved from the Rustler in that area. Dissolution was particularly active in the Rustler in Nash Draw. These data are the basis for indicating an approximate position of the eastern edge of the belt where halite is absent from the Rustler Formation (Figure 2).

The spring deposits along the eastern edge of Nash Draw are presumed to be the result of this near-surface dissolution. The presence of Late Pleistocene fossils in the spring deposits, and the fact that the springs are now extinct, indicate that the groundwater

regime originally responsible for dissolving underground beds of gypsum and depositing spring deposits is no longer active. That activity was part of a paleokarst system resulting from a much different climatic regime. However, dissolution of the Rustler gypsum in Nash Draw began late in Gatuña time and is a continuing process.

WIPP-14 was drilled because of the presence of a pronounced gravity low suggesting a localized structural depression at that locality. The working hypothesis specified that the low density responsible for the gravity anomaly was due to dissolution of shallow



beds, particularly in the Rustler Formation, in a manner analogous to that at the WIPP-33 locality (SAND82-1783, pp 2-5). A minor topographic depression is present at WIPP-14, but there is no evidence of collapse at the surface.

The Gatuña Formation is absent at WIPP-14 either because of nondeposition or because of pre-Mescalero erosion. Triassic rocks are ~126 ft (39 m) thick; the Rustler is 313 ft (96 m) thick. Halite is absent in the Rustler above the Culebra Dolomite but is present in the lower part of the Rustler underlying the Culebra. Much of the calcium sulfate in the Rustler occurs as anhydrite.

The stratigraphic succession at WIPP-14 is comparable to that in other nearby drillholes. At Drillhole WIPP-34 ~0.2 mi (0.3 km) west of WIPP-14, halite was not found above the Culebra Dolomite. Likewise, in other nearby drillholes (e.g., P-5, ~1.2 mi (2 km) southwest of WIPP-14), halite is present in the Rustler only in the unit underlying the Culebra Dolomite. This indicates a regional distribution of halite that is not limited to the locality of WIPP-14. This pattern of distribution characterizes the central portion of the WIPP site, including the WIPP shaft itself (Borns and others, 1982, p 43).

Halite may have been present formerly in the upper part of the Rustler Formation in the vicinity of WIPP-14 and WIPP-34 but has been since removed by dissolution. Such dissolution was a regional intraformational process not confined to the point at which WIPP-14 was drilled. Therefore, the hypothesis that the low density responsible for the gravity anomaly at WIPP-14 was due to the local dissolution of shallow beds is untenable. The WIPP-14 locality is not analogous to the WIPP-33 locality. At WIPP-33 halite has been removed throughout the Rustler Formation. WIPP-33 is situated in a belt along the western border of the WIPP site parallel to Nash Draw where halite is completely absent from the Rustler (Figure 2).

Holt and Powers (1984) have suggested that the extent of dissolution around the WIPP shaft ~2.1 mi (3.5 km) southwest of WIPP-14 is less than previously reported. They have mapped the shaft in detail and report undisturbed depositional features in the zone originally believed to be dissolution residue (Jones, 1981). They state that "there is no disruption apparent which would be caused by volume reduction" (Holt and Powers, 1984, pp 4-11). This suggests that many structures in Rustler sediments may be explained as original depositional features. Rustler sedimentary facies and the environments of their deposition, as well as the concept of intraformational dissolution, should be reexamined in the light of this hypothesis.

## Discussion and Conclusions

No attempt is made here to explain the gravity anomalies described by Barrows and others (1983) at and near the WIPP site, the anomaly that resulted in drilling WIPP-14. However, anomalous gravity data from the WIPP site and east of the approximate position of the dissolution front in the Rustler Formation (Figure 2) are probably the result of factors other than near-surface dissolution.

True karst features should not be predicted on the Livingston Ridge surface east of the indicated dissolution front in the Rustler. The pattern of the isopach maps in this report (Figures 2 and 4) suggests that dissolution of halite in the Rustler, as indicated by Mercer (1983, Figure 13) north and east of WIPP-33, probably occurred during Gatuña time. The Rustler was then within the Gatuña drainage system and only partially protected by overlying beds. Gatuña deposits throughout southeastern New Mexico indicate that during the time of their deposition surface water was much more abundant than at any time since. Many of the results of dissolution observed today occurred during Gatuña time, more than 500,000 yr ago.

True karst surface features contain evidence of surface collapse, such as at the WIPP-33 locality, a topographic depression that is being actively filled by alluviation. Gypsum has been dissolved from the Rustler Formation in zones adjacent to the Magenta member at WIPP-33, leaving some subsurface cavities. This local dissolution near the eastern margin of Nash Draw is attributed to spring-sapping, as indicated by the nearby gypsite spring deposits containing camel and horse fossils. The spring-sapping and associated cliff retreat are not presently active, but probably their greatest most recent activity was contemporaneous with the now-extinct mammalian fauna. No cavities have been observed similar to those in WIPP-33 in any nearby potash-exploration holes to the east (or hundreds of other holes to the east); so it is here concluded that the WIPP-33 collapse feature is unique. Despite the statement of Barrows and others (1983) that "all [gravity anomalies] are assumed to have a common origin" (p 63), karstic features are by definition associated with surface collapse; not all the gravity anomalies show surface collapse or even topographic depressions. In fact, the center of one -0.8 mgal gravity anomaly is 1/4 mi (400 m) east of the WIPP-14 topographic depression, which is here interpreted as a blowout. WIPP-14 contained no subsurface cavities. Thus, the "modeled gravity... from the infinitely long polygonal bodies [the assumed 'karst

conduits']" (p 63) does not provide a unique or inescapable interpretation of the gravity data, but was evidently the interpretation preferred by Barrows and others.

The absence of true surface karst features at and near the WIPP site may be explained by the depth of burial of the Rustler Formation in that area and by the protective cover of the rocks overlying the Rustler. The Rustler is at least 500 ft (152 m) beneath the surface at the site. The overlying Dewey Lake has "minimal permeability and does not contain significant quantities of ground water. . . . The Dewey Lake is a protective cover that retards dissolution of evaporites in the Rustler Formation" (Mercer, 1983, p 70).

Dissolution will become a major process east of WIPP-33 *only* if large quantities of unsaturated water gain access to the Rustler Formation. Except for minor intermittent drainages from Livingston Ridge

into Nash Draw, erosion does not appear capable of breaching the Mescalero caliche. At present, the Mescalero is an additional obstruction to infiltrating and recharging underlying beds.

Dissolution west of the indicated dissolution front in the Rustler Formation (the belt from which all halite has been dissolved from the Rustler) has occurred since late in Gatuña time (Middle Pleistocene) and continues today in Nash Draw. The area in the vicinity of WIPP-33 was above stream level and subject to erosion during Gatuña time. Dissolution at WIPP-33 is presumed to have begun then, but evidence on the surface—collapse of the Mescalero caliche and modern arroyo drainage into the collapse sink—points to post-Mescalero circulation of groundwater and consequent dissolution of remaining soluble salts. However, this modern circulation of groundwater is seasonal and probably less effective than during more humid Gatuña time.

## References

- G. O. Bachman, "Cenozoic Deposits of Southeastern New Mexico and an Outline of the History of Evaporite Dissolution," USGS J of Res (2):135-149 (1976).
- G. O. Bachman, *Regional Geology and Cenozoic History of Pecos Region, Southeastern New Mexico*, Open-File Report 80-1099 (USGS, 1980).
- G. O. Bachman, *Regional Geology of Ochoan Evaporites, Northern Part of the Delaware Basin*, Circular 184 (Santa Fe, NM: NM Bur of Mines and Minerals, 1984).
- G. O. Bachman and M. N. Machette, *Calic Soils and Calcretes in the Southwestern United States*, Open-File Report D-77-946 (USGS, 1977).
- R. A. Bagnold, *The Physics of Blown Sand and Desert Dunes* (London: Chapman and Hall, 1973).
- L. J. Barrows et al, *Waste Isolation Pilot Plant (WIPP) Site Gravity Survey; and Interpretation*, SAND82-2922 (Albuquerque, NM: Sandia National Laboratories, 1983).
- D. J. Borns et al, *Deformation of Evaporites Near the Waste Isolation Pilot Plant (WIPP) Site*, SAND82-1069 (Albuquerque, NM: Sandia National Laboratories, 1983).
- L. H. Gile, F. F. Peterson, and R. B. Grossman, "Morphological and Genetic Sequences of Carbonate Accumulation in Desert Soils," *Soil Science* 101(5):347-360 (1966).
- L. H. Gile, J. H. Hawley, and R. B. Grossman, *Soils and Geomorphology in the Basin and Range Area of Southern New Mexico—Guidebook to the Desert Project*, Memoir 39 (Santa Fe, NM: New Mexico Bureau of Mines and Mineral Resources, 1981).
- R. M. Holt and D. W. Powers, *Geotechnical Activities in the Waste Handling Shaft, Waste Isolation Pilot Plant (WIPP) Project, Southeastern New Mexico*, WTSD-TME 038 (Carlsbad, NM: US DOE, 1984).
- G. A. Izett and R. E. Wilcox, *Pearlette Family Ash Beds in the Western United States and Southern Canada*, USGS Misc Inv. Map I-I-1325 (1982).
- C. L. Jones, *Salt Deposits of Los Medaños Area, Eddy and Lea Counties, NM, With Sections on Ground Water Hydrology by M. E. Cooley and Surficial Geology by G. O. Bachman*, Open-File Report 4339-7 (USGS, 1973).
- C. L. Jones, *Test Drilling for Potash Resources: Waste Isolation Pilot Plant Site, Eddy County, NM*, Open-File Report 78-592, 2 vol (USGS, 1978).
- C. L. Jones, *Geological Data for Borehole ERDA-9, Eddy County, New Mexico*, Open-File Report 81-469 (USGS, 1981).
- C. E. Junge and R. T. Werby, "The Concentration of Chloride, Sodium, Potassium, Calcium, and Sulfate in Rain Water over the United States," *J of Meteorol* 15(5):417-425 (1958).
- S. J. Lambert, *Dissolution of Evaporites In and Around the Delaware Basin, Southeastern New Mexico and West Texas*, SAND 82-0461 (Albuquerque, NM: Sandia National Laboratories, 1983).
- L. H. Lattman, "Calcium Carbonate Cementation of Alluvial Fans in Southern Nevada," *Geol Soc Am Bull* 84(9):3013-3028 (1973).
- W. T. Lee, "Erosion By Solution and Fill," *USGS Bull* 760-D (1925).
- V. C. Maley and R. M. Huffington, "Cenozoic Fill and Evaporite Solution in Delaware Basin, Texas and New Mexico," *Geol Soc Am Bull* 64(5):539-546 (1953).
- J. W. Mercer, *Geohydrology of the Proposed Waste Isolation Pilot Plant Site, Los Medaños Area, Southeastern New Mexico*, USGS Water Res Inv Rpt 83-4016 (USGS, 1983).
- W. H. Monroe, *A Glossary of Karst Terminology*, USGS Water Supply Paper 899 (USGS, 1970).
- J. N. Rosholt, *Uranium-Trend Dating of Quaternary Sediments*, Open-File Report 80-1087 (USGS, 1980).
- J. N. Rosholt, USGS, written communication (1979).
- Sandia National Laboratories and US Geological Survey, *Basic Data Report for Drillhole WIPP-33*, SAND80-2011 (Albuquerque, NM: Sandia National Laboratories, 1981).
- Sandia National Laboratories and D'Appolonia Consulting Engineers, *Basic Data Report for Drillhole WIPP-14*, SAND82-1783 (Albuquerque, NM: Sandia National Laboratories, 1982).
- B. J. Szabo, "Uranium-Series Dating of Quaternary Successions," *Proc VIII INQUA Congress* (Paris, France: 1969).
- US DOE, *DOE Responses to the State of New Mexico's Comments on "Summary of the Results of the Evaluation of the WIPP Site and Preliminary Design Validation Program," (WIPP-DOE-161), WIPP-DOE-174* (Albuquerque, NM: USDOE, 1983).

**DISTRIBUTION:**

US Department of Energy, Headquarters (2)  
Office of Nuclear Waste Management  
Attn: A. Follett, Project Coordinator (WIPP)  
R. Stein  
Washington, DC 20545

US Department of Energy (2)  
Albuquerque Operations  
Attn: G. C. Romatowski  
D. G. Jackson, Director, Public Affairs Division  
PO Box 5400  
Albuquerque, NM 87185

US Department of Energy (8)  
Attn: W. R. Cooper, WIPP Project Office,  
(Carlsbad) (2)  
A. Hunt, WPO (Carlsbad) (4)  
R. Crawley, WPO (Carlsbad) (2)  
PO Box 3090  
Carlsbad, NM 88220

US Department of Energy  
Carlsbad WIPP Project Office  
Room 113, Federal Building  
Carlsbad, NM 88220

US Department of Energy, NPO (2)  
Office of Nuclear Waste Isolation  
Attn: Jeff O. Neff  
R. Wunderlich  
505 King Avenue  
Columbus, OH 43201

US Department of Energy, SRPO  
Office of Nuclear Waste Isolation  
Attn: G. Appel  
505 King Avenue  
Columbus, OH 43201

US Nuclear Regulatory Commission (2)  
Division of Waste Management  
Attn: Michael Bell  
Hubart Miller  
Mail Stop 697SS  
Washington, DC 20555

Battelle Memorial Institute (9)  
Project Management Division  
Attn: W. Carbiener, General Manager (3)  
J. Treadwell  
T. Naymik  
J. Kirchner  
L. Page  
O. Swanson  
ONWI Library  
505 King Avenue  
Columbus, OH 43201

Westinghouse Electric Corporation (3)  
Attn: P. Miskimin  
B. Rigney  
Library  
PO Box 2078  
Carlsbad, NM 88221

IT Corporation  
Attn: R. McKinney  
D. Colton  
J. Morse  
PO Box 2078  
Carlsbad, NM 88221

Bechtel Inc.  
Attn: E. Weber  
D. Roberts  
PO Box 3965  
45-11-B34  
San Francisco, CA 94119

Konrad B. Krauskopf  
Department of Geology  
Stanford University  
Stanford, CA 94305

Frank L. Parker  
Department of Environmental and  
Water Resources Engineering  
Vanderbilt University  
Nashville, TN 37235

John O. Blomeke  
Oak Ridge National Laboratory  
PO Box X  
Oak Ridge, TN 37830



DISTRIBUTION (cont):

John D. Bredehoeft  
Western Region Hydrologist  
Water Resources Division  
US Geological Survey  
345 Middlefield Road  
Menlo Park, CA 94025

Dr. Karl P. Cohen  
928 N. California Avenue  
Palo Alto, CA 94303

Fred M. Ernsberger  
Adjunct Professor  
Department of Material Sciences and Engineering  
University of Florida  
Gainesville, FL 32611

Hans P. Eugster  
Department of Earth Sciences  
Johns Hopkins University  
Baltimore, MD 21218

Rodney C. Ewing  
University of New Mexico  
Department of Geology  
Albuquerque, NM 87131

Charles Fairhurst  
Department of Geological Sciences  
University of Minnesota  
Minneapolis, MN 55455

William R. Muehlberger  
Department of Geological Sciences  
University of Texas at Austin  
Austin, TX 78712

D'Arcy A. Shock  
233 Virginia  
Ponca City, OK 74601

National Academy of Sciences  
Committee on Radioactive Waste Management  
Attn: John T. Holloway, Senior Staff Officer  
2101 Constitution Avenue, NW  
Washington, DC 20418

Hobbs Public Library  
Attn: Ms. Marcia Lewis, Librarian  
509 N. Ship Street  
Hobbs, NM 88248

New Mexico Tech  
Martin Speere Memorial Library  
Campus Street  
Socorro, NM 87801

New Mexico State Library  
Attn: Ms. Ingrid Vollenhofer  
PO Box 1629  
Santa Fe, NM 87503

University of New Mexico  
Zimmerman Library  
Attn: Zanier Vivian  
Albuquerque, NM 87131

Atomic Museum, Kirtland East AFB  
WIPP Public Reading Room  
Attn: Ms. Gwynn Schreiner  
Albuquerque, NM 87185

Carlsbad Municipal Library  
WIPP Public Reading Room  
Attn: Lee Hubbard, Head Librarian  
101 S. Hallagueno St.  
Carlsbad, NM 88220

Thomas Brannigan Library  
Attn: Don Dresp, Head Librarian  
106 W. Hadley St.  
Las Cruces, NM 88001

Roswell Public Library  
Attn: Ms. Nancy Langston  
301 N. Pennsylvania Avenue  
Roswell, NM 88201

State of New Mexico (3)  
Environmental Evaluation Group  
Attn: Robert H. Neill, Director  
320 Marcy Street  
PO Box 968  
Santa Fe, NM 87503

NM Department of Energy and Minerals (2)  
Attn: Larry Kehoe, Secretary  
Kasey LaPlante, Librarian  
PO Box 2770  
Santa Fe, NM 87501



DISTRIBUTION (cont):

Dr. D. K. Mukherjee  
Ontario Hydro Research Lab  
800 Kipling Avenue  
Toronto, Ontario  
CANADA  
MBZ 554

Institut für Tieflagerung (3)  
Attn: K. Kühn  
N. Jockwer  
H. Gies  
Theodor-Heuss-Strasse 4  
D-3300 Braunschweig  
FEDERAL REPUBLIC OF GERMANY

Michael Langer  
Bundesanstalt für Geowissenschaften und Rohstoffe  
Postfach 510 153  
3000 Hannover 51  
FEDERAL REPUBLIC OF GERMANY

Klaus Eckart Maass  
Hahn-Meitner-Institut für Kernforschung  
Glienicke Strasse 100  
1000 Berlin 39  
FEDERAL REPUBLIC OF GERMANY

Rolf-Peter Randl  
Bundesministerium für Forschung und Technologie  
Postfach 200 706  
5300 Bonn 2  
FEDERAL REPUBLIC OF GERMANY

Helmut Rothemeyer  
Physikalisch-Technische Bundesanstalt  
Bundesanstalt 100, 3300 Braunschweig  
FEDERAL REPUBLIC OF GERMANY

Kernforschung Karlsruhe (2)  
Attn: R. Koster  
Reinhard Kraemer  
Postfach 3640  
7500 Karlsruhe  
FEDERAL REPUBLIC OF GERMANY

Svensk Karnbransleforsorjning AB  
Project KBS  
Karnbranslesakerhet  
Attn: Fred Karlsson  
Box 5864  
10248 Stockholm  
SWEDEN

Tuen Deboer, Mgr.  
Experimental Programs  
Underground Storage of Radioactive Waste  
3 Westerduinweg  
PO Box 1  
1755 ZG  
Petten  
THE NETHERLANDS

Argonne National Laboratory  
Attn: S. Fried  
9700 South Cass Avenue  
Argonne, IL 60439

Battelle Pacific Northwest Laboratories  
Attn: D. J. Bradley  
Battelle Boulevard  
Richland, WA 99352

US Nuclear Regulatory Commission (3)  
Division of Waste Management  
Attn: M. Bell  
Mail Stop 69755  
Washington, DC 20555

IT Corporation (3)  
Attn: D. Stephanson  
D. Shukla  
T. Dillon  
Suite 103  
2350 Alamo, SE  
Albuquerque, NM 87106

C. S. Fore  
Ecological Sciences Information Center  
Oak Ridge National Laboratory - Bldg. 2001  
PO Box X  
Oak Ridge, TN 37830

John Handin  
Center of Tectonophysics  
Texas A&M University  
College Station, TX 77840

D. E. Large  
US Department of Energy  
Research & Technical Support Division  
PO Box E  
Oak Ridge, TN 37830

DISTRIBUTION (cont):

Paul W. Levy, Senior Scientist  
Brookhaven National Laboratory  
Associated Universities, Inc.  
Upton, NY 11973

Los Alamos National Laboratory  
Attn: B. Erdal, CNC-11  
Los Alamos, NM 87545

University of Minnesota  
Dept. of Energy and Materials Science  
Attn: R. Oriani  
151 Amundson Hall  
421 Washington Avenue SE  
Minneapolis, MN 55455

Oak Ridge National Laboratory (4)  
Attn: R. E. Blanko  
E. Bondietti  
C. Claiborne  
G. H. Jenks  
Box Y  
Oak Ridge, TN 37830

George Pinder  
Department of Civil Engineering  
Princeton University  
Princeton, NJ 08540

Dr. R. O. Pohl  
Department of Physics  
Clark Hall  
Cornell University  
Ithaca, NY 14853

RE/SPEC Inc.  
Attn: P. Gnirk  
PO Box 725  
Rapid City, SD 57701

RE/SPEC, Inc.  
Attn: S. W. Key  
PO Box 14984  
Albuquerque, NM 87191

Rockwell International (2)  
Atomics International Division  
Rockwell Hanford Operations  
Attn: M. J. Smith  
W. W. Schultz  
PO Box 800  
Richland, WA 99352

E. Roedder  
US Department of the Interior  
959 National Center  
Geological Survey  
Reston, VA 22092

Dr. Shosei Serata  
Serata Geomechanics  
1229 Eighth Street  
Berkeley, CA 94170

US Department of Energy (2)  
Division of Waste Products  
Attn: G. H. Daly  
J. E. Dieckhoner  
Mail Stop B-107  
Washington, DC 20545

New Mexico Bureau of Mines and Mineral Resources  
(2)  
Attn: F. E. Kottolowski, Director  
J. Hawley  
Socorro, NM 87801

US Department of Energy (2)  
Idaho Operations Office  
Nuclear Fuel Cycle Division  
Attn: R. M. Nelson  
J. Whitsett  
550 Second Street  
Idaho Falls, ID 83401

US Department of Energy (2)  
Savannah River Operations Office  
Waste Management Project Office  
Attn: J. R. Covell  
D. Fulmer  
PO Box A  
Aiken, SC 29801

US Geological Survey  
Special Projects  
Attn: R. Snyder  
MS954, Box 25046  
Denver Federal Center  
Denver, CO 80255

US Geological Survey  
PO Box 26659  
Albuquerque, NM 87125

DISTRIBUTION (cont):

US Geological Survey  
Conservation Division  
Attn: W. Melton  
PO Box 1857  
Roswell, NM 88201

University of Arizona (2)  
Department of Nuclear Engineering  
Attn: J. G. McCray  
J. J. K. Daemen  
Tuscon, AZ 85721

Fenix & Scisson, Inc.  
Attn: J. A. Cross  
3170 W. Sahara Avenue  
Spanish Oaks D-12  
Las Vegas, NV 89102

University of New Mexico  
Geology Department  
Attn: D. G. Brookins  
Albuquerque, NM 87131

Woodward-Clyde Consultants (2)  
Library Western Region  
Attn: Anne T. Harrigan, Librarian  
Charles Taylor  
3 Embarcadero Center, Suite 700  
San Francisco, CA 94111

Michigan Technological University  
Department of Social Sciences  
Center for Waste Management Programs  
Attn: G. L. Downey  
Houghton, MI 49931

D. W. Powers  
Department of Geological Sciences  
University of Texas at El Paso  
El Paso, TX 79902

G. O. Bachman (10)  
Star Route  
Box 1028  
Corrales, NM 87048

1540 W. C. Luth  
1543 J. L. Krumhansl  
3310 W. D. Burnett  
6000 E. H. Beckner  
6253 D. A. Northrop  
6253 A. R. Sattler  
6257 J. K. Linn  
6257 R. R. Beasley  
6300 R. W. Lynch  
6310 T. O. Hunter  
6312 F. W. Bingham  
6313 T. E. Blejwas  
6314 J. R. Tillerson  
6315 S. Sinnock  
6330 W. D. Weart  
6331 A. R. Lappin (5)  
6331 G. E. Barr  
6331 R. L. Beauheim  
6331 D. J. Borns  
6331 D. M. Harvey  
6331 S. J. Lambert (20)  
6331 W. B. Miller  
6331 K. L. Robinson  
6331 S. E. Shaffer  
6331 C. L. Stein  
6332 L. D. Tyler  
6332 F. G. Yost  
6332 Sandia WIPP Central Files (Dissolution) (2)  
7100 C. D. Broyles  
7130 J. D. Kennedy  
7133 R. D. Statler  
7133 C. W. Gulick  
7133 J. W. Mercer  
7135 P. D. Seward  
8024 M. A. Pound  
3141 C. M. Ostrander (5)  
3151 W. L. Garner (3)  
3154-3 C. H. Dalin (28)

For DOE/TIC (Unlimited Release)